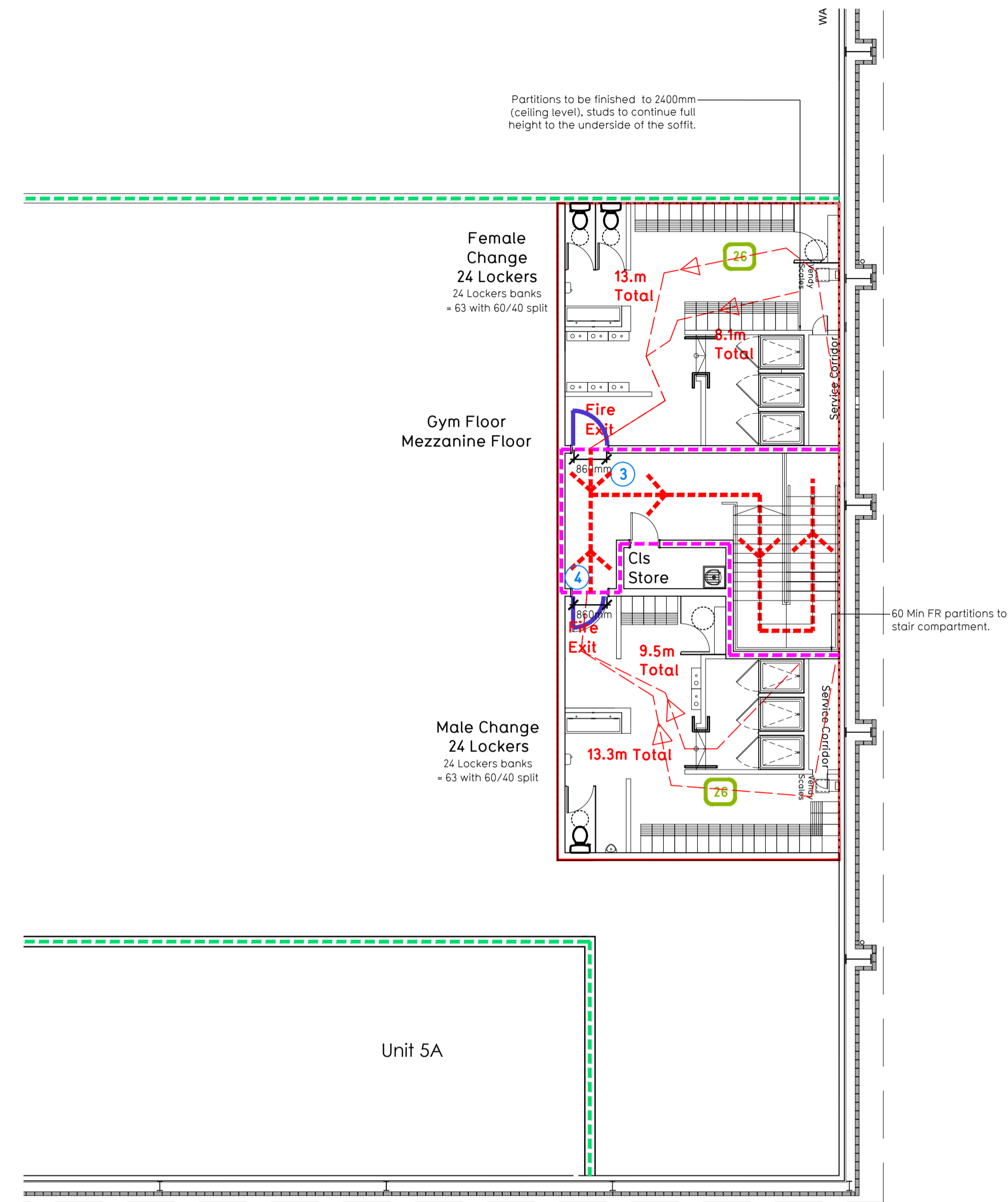


Ground Floor Plan



Mezzanine Floor Plan

Fire Evacuation Key

- Existing wall to achieve min 60 minute fire rating (suitability of wall to be confirmed on site by Pure Gym Main Contractor)
- New wall to achieve min of 60min fire rating
- Protected areas: walls, floors, ceilings and doors to achieve 60 minute fire resistant construction.
- M FD30 - Fire Door 30min Resistance.
- M FD60 - Fire Door 60min Resistance.
- Dis Ref Disabled Refuge Area - 900 x 1400mm
- 30 Occupancy level within area
- ↗ Escape Route Unprotected
- ↘ Escape Direction Angle
- ↔ Escape Route Protected/Shared
- ↔ Minimum Clear Widths
- 0 Exit No.

Fire Alarm
Fire Alarm designed and installed to BS 5839. Smoke & heat detection / emergency lighting by specialist. Please refer to MSE engineer's drawings / specifications.

Escape Lighting
Emergency lighting designed and installed to BS 5266: Part 1. Please refer to MSE Engineer's drawings / specification.

Escape Route Widths
In line with Sections 3.21 & 3.22 of 'Approved Document Part B, Volume 2 - buildings other than dwellings' - the adjacent calculations provide justification for the clear opening widths for escape from each floor level/ room in accordance with Table 4 & Appendix C.

Ground Floor
Ground Floor Estimated Occupancy Capacity = 150 Persons
First Floor Estimated Occupancy Capacity = 90 Persons
Total Estimated Occupancy Capacity = 240 Persons

Ground Floor
Exit 1 min Clear Opening Width = 1000mm (assume as per 1050mm allows 220 persons to escape)
Exit 2 min Clear Opening Width = 1300mm (largest opening to be discounted)

Total Aggregate Width for Ground Floor (Less Largest Opening Width of 1300mm from Exit 2) = 100mm (220). Exit 1 would allow a max. No. of 220 persons to escape, which is larger than the total estimated occupancy capacity of 150 Persons and is therefore thought to meet with the Approved Document Part B.

Mezzanine Floor
Exit 3 Serving Female Changing room min Clear Opening Width = 860mm (This leads to the only exit, therefore maximum travel distance can only be 18m)
Exit 4 Serving Male Changing room min Clear Opening Width = 860mm (This leads to the only exit, therefore maximum travel distance can only be 18m)

Final Escape Widths
Final Exit A min Clear Opening Width = 1000mm (assume as per 1050mm allows 220 persons to escape)
Final Exit B min Clear Opening Width = 2200mm (Combined with ground and mezzanine assume as per 1050mm allows 220 persons to escape)

Exit A and Exit B are the final points of exit from the unit and have to a min. clear width sufficient to accommodate both Ground and Mezzanine occupancies. All exits have a minimum clear width in excess of 1050mm, with either providing sufficient capacity to provide means of escape for in excess of 220 people.

Rev	Date	Description	Drawn/Checked
E	28.06.19	Update to FEP for CP Issue.	CV/PG
D	05.06.19	Entrance amended to studio, breakfast bar re-orientated.	EK/ARB
C	28.05.19	Entrance amended to studio, cleaners store door relocated. Key amended.	EK/ARB
B	30.04.19	Layout updated following GA changes.	EK/ARB
A	28.02.19	General layout updated.	EK/PG

PROJECT TITLE		DRAWING TITLE	
Bromsgrove Unit 5A, Bromsgrove Retail Park, Bromsgrove, Worcestershire, B61 0DD		Method of Escape	
DRAWN FOR SCALE	DATE	SCALE	JOB NO.
EK/PG	23.01.19	1:100@A1	IA-MBF-005
DRAWING PURPOSE			DRAWING NO.
			003
CONSTRUCTION			Rev
			E

Pure Gym Ltd
 Town Centre House
 The Merrion Centre
 Leeds
 LS2 9LY
 e: architecture@puregym.com
 t: 0113 285 8787
 w: www.puregym.com