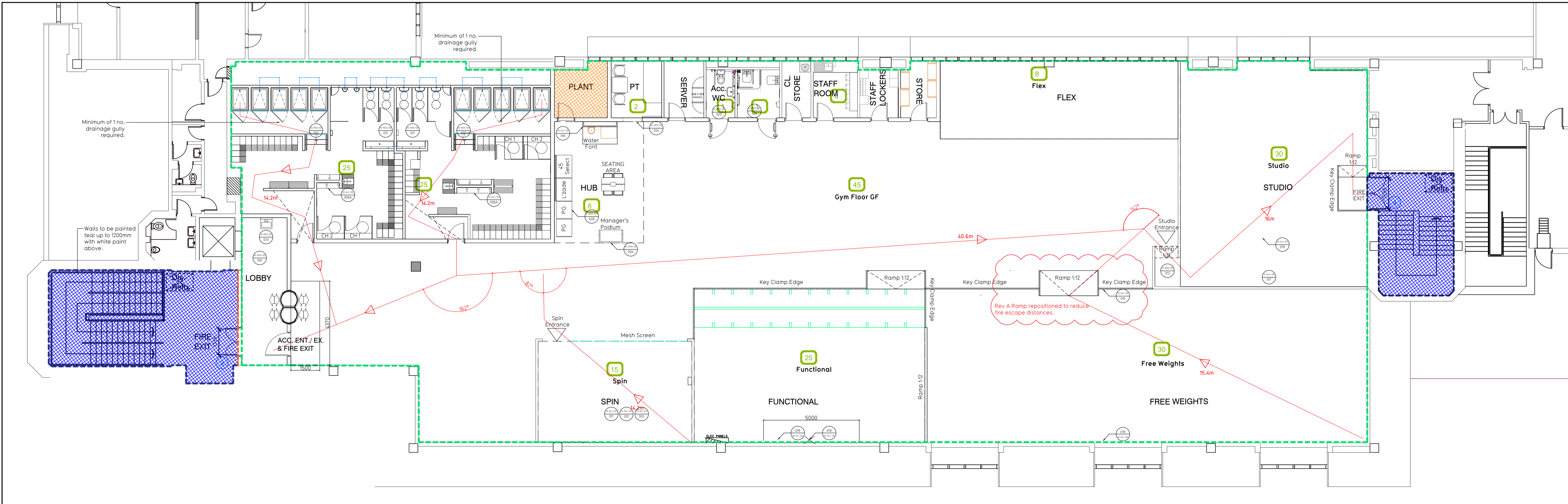


Proposed Ground Floor Plan



Proposed First Floor Plan

NOTE:
 - Proposals must comply with all acoustic, fire & building regulation requirements
 - No dimensions are to be scaled from this drawing. The contractor is responsible for checking all dimensions on site

Fire Evacuation Key	
	Existing wall to achieve min 60 minute fire rating (suitability of wall to be confirmed on site by Pure Gym Main Contractor)
	New wall to achieve min of 60min fire rating
	Existing wall to achieve min 120 minute fire rating (suitability of wall to be confirmed on site by Pure Gym Main Contractor)
	New wall to achieve min of 120min fire rating
	Protected areas: walls, floors, ceilings and doors to achieve 60minute fire resistant construction.
	Protected areas: walls, floors, ceilings and doors to achieve 120 minute fire resistant construction.
	Occupancy level within area
	Fire Escape Route
	Minimum Clear Widths
	1050 min
	Exit No.
	Shared Escape Route

Escape Route Widths:
 In line with Sections 3.21 & 3.22 of Approved Document Part B, Volume 2 - buildings other than dwellings - the adjacent calculations provide justification for the clear opening widths for escape from each floor level/ room in accordance with Table 4 & Appendix C.

Ground Floor
 Exit 1 Clear Opening Width = 1146mm (allows 110 persons to escape)
 Exit 2 Clear Opening Width = 1662mm (largest opening to be discounted)
 Total Aggregate Width for Floor (Less Largest Opening Width of 1662mm from Exit 2) = 1146mm
 Ground Floor Total Estimated Occupancy Capacity = 110 Persons

First Floor
 Exit 3 Clear Opening Width = 1338mm (allows 110 persons to escape)
 Exit 4 Clear Opening Width = 1538mm (largest opening to be discounted)
 Total Aggregate Width for Floor (Less Largest Opening Width of 1538mm from Exit 3) = 1338mm
 First Floor Total Estimated Occupancy Capacity = 110 Persons

Sprinklers
 System designed and installed in compliance with BS EN 12845:2015 & LPC Technical Bulletin

Fire Alarm
 Fire Alarm designed and installed to BS 5839. Smoke & heat detection / emergency lighting by specialist. Please refer to M&E engineer's drawings / specifications.

Escape Lighting
 Emergency escape lighted designed and installed in accordance with BS 5266: Part 1. Please refer to M&E Engineer's drawings for final layout and specification.

B	07.01.20	Update to key.	CV/PG
A	29.11.19	Ramp to free-weights moved for improved travel distances.	CV/PG
Rev	Date	Description	Drawn/Checked
Calcot		Fire Evacuation Plan	
Bath Road, Calcot, Reading, Berkshire, RG31 7SA		Ground and First Floor Plans	
RSP/CV	29.10.19	1:100 @ A1	IA-LBF-040 003 - FEP
TENDER		B	
		Pure Gym Ltd Town Centre House The Merlion Centre Leeds LS2 8LY e: architecture@puregym.com t: 0113 285 8787 w: www.puregym.com	