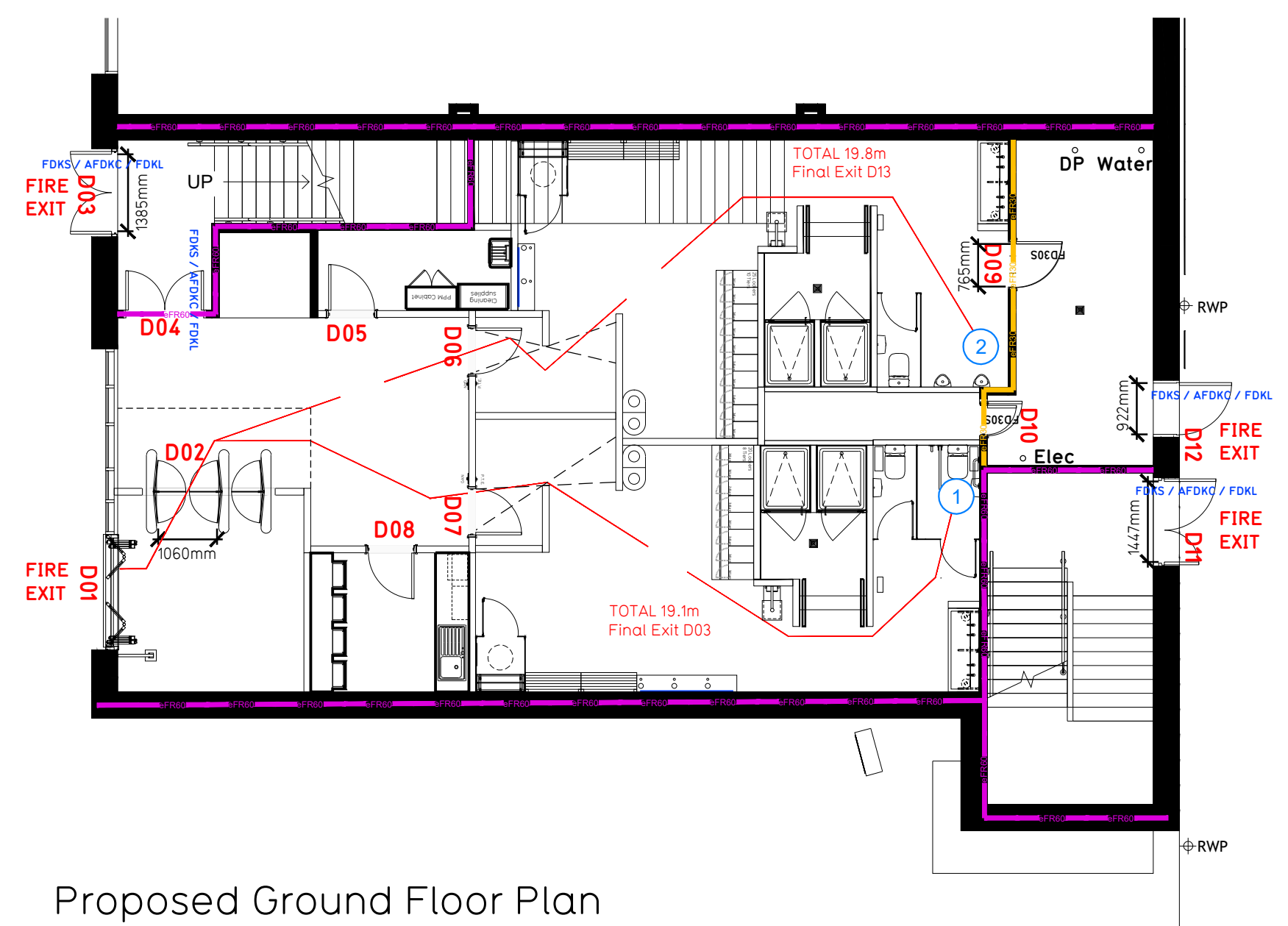
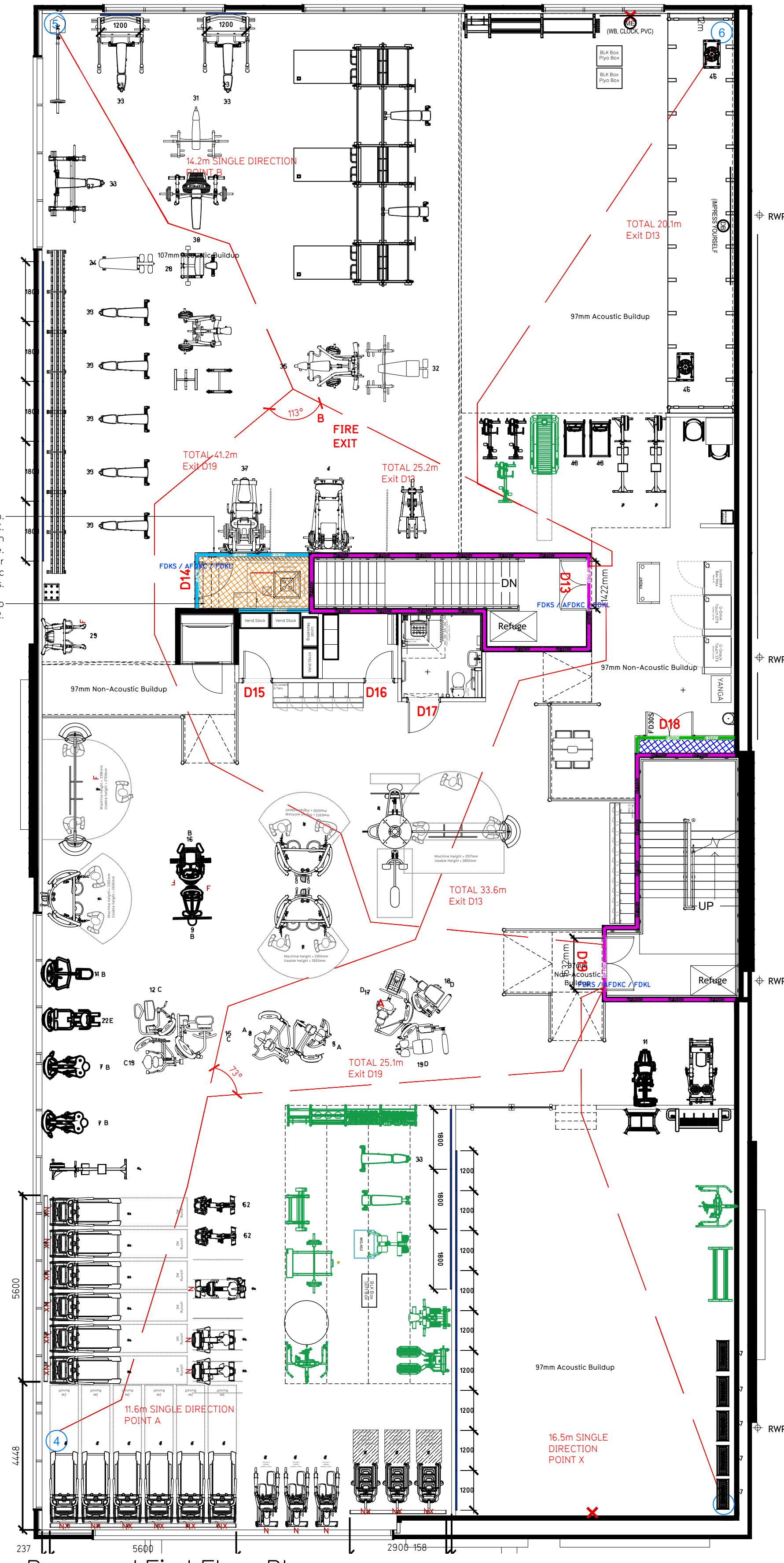


NOTE:

- Proposals must comply with all acoustic, fire & building regulation requirements
- No dimensions are to be scaled from this drawing. The contractor is responsible for checking all dimensions on site



Proposed Ground Floor Plan



Proposed First Floor Plan

Fire Evacuation Key

	Existing wall to achieve min 30 minute fire rating (suitability of wall to be confirmed on site by Pure Gym Main Contractor)		Fire Escape Route
	Existing wall to achieve min 60 minute fire rating (suitability of wall to be confirmed on site by Pure Gym Main Contractor)		Minimum Clear Widths
	New wall to achieve min of 30min fire rating		Shared Escape Route
	New wall to achieve min of 60min fire rating		Fire Door Rating - 30min. / 60min.
	Protected areas: walls, floors, ceilings and doors to achieve 30minute fire resistant construction.		Fire Door Signage - Fire Door Keep Shut / Automatic Fire Door Keep Clear / Fire Door Keep Locked
	Protected areas: walls, floors, ceilings and doors to achieve 60 minute fire resistant construction.		

Fire Strategy:
The layout has been developed in line with the guidance set out in building fire strategy 23853-HYD-XX-XX-RP-FF-0001. This has been developed in conjunction with Puregym on an initial target occupancy of 300 persons.

Travel Distances:
The design is compliant with the travel distances from Table 05 in accordance with BS9399-2017, 20m from escape in one direction only and 50m where an alternative is available.

Ground Floor - Occupancy is not expected to exceed 80 persons
Final Exit D11 limited by Double Speedgate D02 Clear Opening Width = 1060mm (allows 253 persons to escape)
Final Exit D03 limited by Storey Exit D04 Clear Opening Width = 1385mm (allows 337 persons to escape, largest opening to be discounted)

First Floor
Storey Exit D13 limited by Final Exit D03 Clear Opening Width = 1385mm (allows 337 persons to escape)
Storey Exit D18 limited by Final Exit D18 Clear Opening Width = 1447mm (allows 352 persons to escape, largest opening to be discounted)

Summary:
GF (60 persons) + FF (337 persons) = 397 persons
Based on N/A of 10973qph, the Puregym max peak occupancy target = 196 persons
Calculated using Puregym Fire Safety Occupancy Levels Forecast Tool which benchmarks against real data from gyms of a similar size.
The designed occupancy of the unit as calculated would allow a max. No. of 197 persons, which is larger than the total estimated occupancy target of 196 persons and is therefore thought to meet with the Fire Strategy for the development.

Fire Alarm
Fire Alarm designed and installed to BS 5839-1:2017. Smoke & heat detection / emergency lighting by specialist. Please refer to MSE engineer's drawings & specifications.

Escape Lighting
Emergency escape lighting designed and installed in accordance with BS 5266-Part 1. Please refer to MSE Engineer's drawings for final layout and specification.

Fire Stopping
All perimeter edges of mezzanine to be appropriately fire stopped to create compartment floor and protect mezzanine structure. All services/drainage penetrations passing through fire rated compartment floor to be fire colored/sealed.

Escape Signage and emergency lighting is CDP under the MSE specification. Details of contractors proposals to be provided to Building Control Approved Inspector and Fire Officer within the Contractors Proposals Package, Clause 1.4

Rev	Date	Description	Rev	Date	Description

PROJECT TITLE
Plymouth North - Derriford Regen
Unit 5, Derriford Commercial Centre

DRAWING TITLE
Fire Evacuation Plan
Ground and First Floor Plans

SCALE
1:100 @ A1

DATE
28.05.24

SCALE
0453

DRAWING No.
003-FEP

DRAWING PURPOSE
CONSTRUCTION

Rev
C00

PUREGYM

Pure Gym Ltd
Town Centre House
The Merrion Centre
Leeds
LS2 8LY
e: architecture@puregym.com
t: 0113 285 8787
w: www.puregym.com