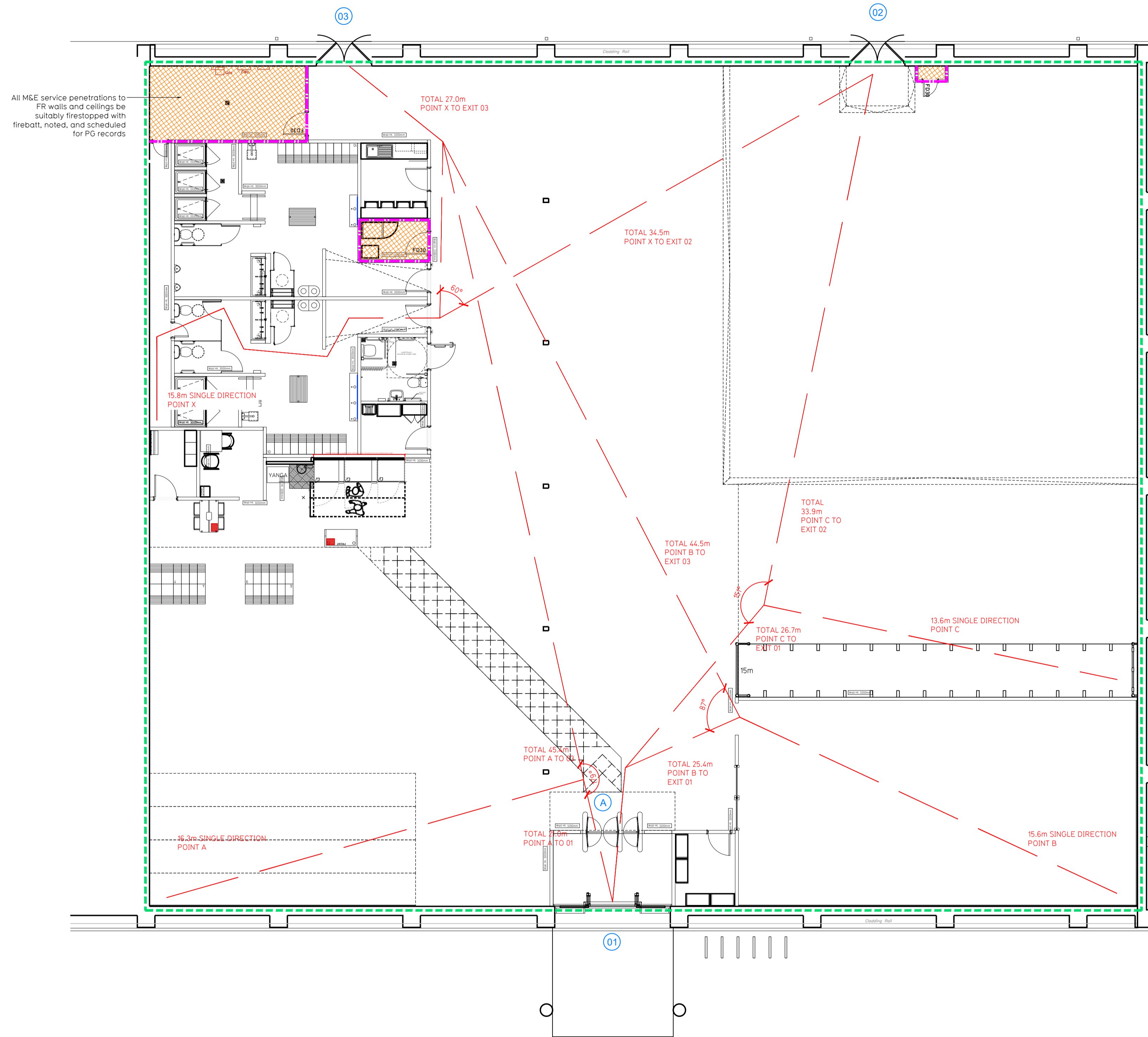


NOTE:

- Proposals must comply with all acoustic, fire & building regulation requirements
- No dimensions are to be scaled from this drawing. The contractor is responsible for checking all dimensions on site



Proposed Ground Floor Plan

Fire Evacuation Key

	Existing wall to achieve min 30 minute fire rating (suitability of wall to be confirmed on site by Pure Gym Main Contractor)		Fire Escape Route
	Existing wall to achieve min 60 minute fire rating (suitability of wall to be confirmed on site by Pure Gym Main Contractor)		Minimum Clear Widths
	New wall to achieve min of 30min fire rating		Exit No.
	New wall to achieve min of 60min fire rating		Shared Escape Route
	Protected areas: walls, floors, ceilings and doors to achieve 30minute fire resistant construction.		Fire Door Rating
	Protected areas: walls, floors, ceilings and doors to achieve 60 minute fire resistant construction.		

Escape Route Widths:
 In line with Sections 3.21.6, 3.22 of 'Approved Document Part B, Volume 2 - buildings other than dwellings' - the adjacent calculations provide justification for the clear opening widths for escape from each floor level/ room in accordance with Table 4 & Appendix C.

Ground Floor
 Exit 1 Limited by Storey Exit A Clear Opening Width = 1060mm (allows 222 persons to escape)
 Exit 2 Clear Opening Width = 1950mm (allows 400 persons to escape)
 Exit 3 Clear Opening Width = 1950mm (allows 400 persons to escape, largest opening to be discounted)

Total Aggregate Width for Floor (Less Largest Opening Width of 1950mm from Exit 3) = 3010mm
 Ground Floor Total Estimated Occupancy Capacity = 622 Persons

Based on NIA of 12629 sqft, the Puregym maximum peak occupancy target = 207 persons
 Calculated using Puregym Fire Safety Occupancy Levels Forecast Tool.

Exit 1&2 provides a min. width of 3010mm and would allow a max. No. of 622 persons to escape, which is larger than the total estimated occupancy capacity of 207 Persons and is therefore thought to meet with the Approved Document Part B.

Fire Alarm
 Fire Alarm designed and installed to BS 5839. Smoke & heat detection / emergency lighting by specialist. Please refer to M&E engineer's drawings / specifications.

Escape Lighting
 Emergency escape lighted designed and installed in accordance with BS 5266: Part 1. Please refer to M&E Engineer's drawings for final layout and specification.

Escape Signage and emergency lighting is CDP under the M&E specification. Details of contractors proposals to be provided to Building Control Approved Inspector and Fire Officer within the Contractors Proposals Package, Clause 14.

Rev	Date	Description	Drawn/Checked

PROJECT TITLE		DRAWING TITLE	
Port Talbot Unit 5, Baglan Bay RP, Port Talbot, SA12 8BZ		Fire Evacuation Plan Ground Floor Plan	
DRAWING CODE	DATE	SCALE	ISSUE NO.
HI/CS	15.06.23	1:100 @ A1	2206
DRAWING PURPOSE			DRAWING NO.
CONSTRUCTION			003-FEP
			Rev
			C00

Pure Gym Ltd
 Town Centre House
 The Meriton Centre
 Leeds
 LS2 8LY
 e: architecture@puregym.com
 t: 0113 285 8787
 w: www.puregym.com