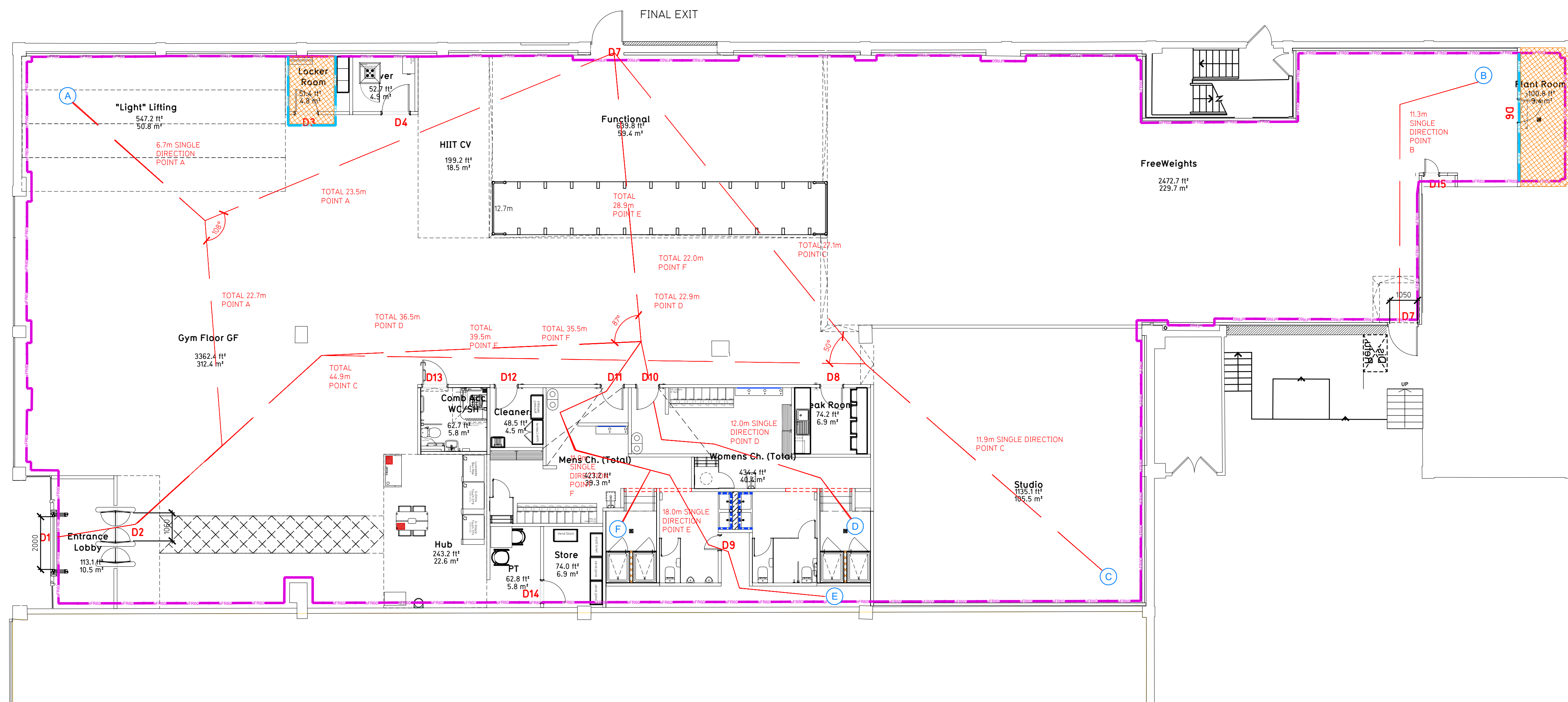


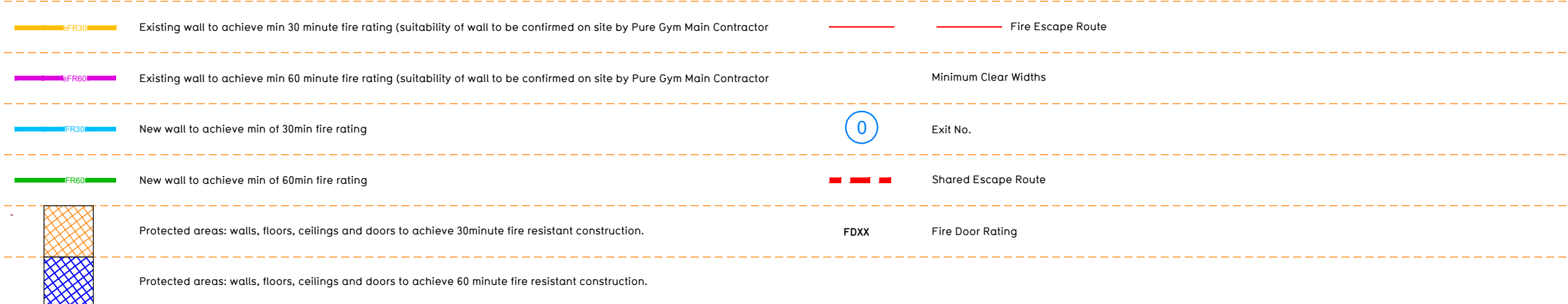
NOTE:

- Proposals must comply with all acoustic, fire & building regulation requirements
- No dimensions are to be scaled from this drawing. The contractor is responsible for checking all dimensions on site



Proposed Ground Floor Plan

Fire Evacuation Key



**Escape Route Widths:**  
 In line with Sections 3.21 & 3.22 of 'Approved Document Part B, Volume 2 - buildings other than dwellings' - the adjacent calculations provide justification for the clear opening widths for escape from each floor level/ room in accordance with Table 4 & Appendix C.

**Ground Floor**  
 Exit D1 Clear Opening Width = 2000mm but is limited by D2 Clear Opening Width 1050mm (allows 122 persons to escape)  
 Exit D5 Clear Opening Width = 1768mm (allows 363 persons to escape, largest opening to be discounted)  
 Exit D7 Clear Opening Width = 1050mm (allows 220 persons to escape)

Total Aggregate Width for Floor (Less Largest Opening Width of 1768mm from D5 = 210mm)  
 Ground Floor Total Estimated Occupancy Capacity = 416 Persons

Exit D7 provides a min. width of 1050mm and would allow a max. No. of 220 persons to escape, which is larger than the total estimated occupancy capacity of 416 Persons and is therefore thought to meet with the Approved Document Part B.

**Signifiers**  
 System design and installed in compliance with BS EN 12845:2015 & LPC Technical Bulletins

**Fire Alarm**  
 Fire Alarm designed and installed to BS 5839, Smoke & heat detection / emergency lighting by specialist. Please refer to M&E engineer's drawings / specifications.

**Escape Lighting**  
 Emergency escape lighted designed and installed in accordance with BS 5266: Part 1. Please refer to M&E Engineer's drawings for final layout and specification.

**Smoke Extract**  
 Smoke Extract System to be designed and installed in accordance with BS 7346: Part 8. Please refer to M&E Engineer's drawings for final layout and specification.

**Fire Stopping**  
 All perimeter edges of mezzanine to be appropriately fire stopped to create compartment floor and protect mezzanine structure. All services/drainage penetrations passing through fire rated compartment floor to be fire collared/sealed.

Escape Signage and emergency lighting is CDP under the M&E specification. Details of contractors proposals to be provided to Building Control Approved Inspector and Fire Officer within the Contractors Proposals Package, Clause 14.

Rev	Date	Description	Drawn/ Checked
<b>PROJECT TITLE</b> Washington The Galleries Shopping Centre, NE38 7RT			
<b>DRAWING TITLE</b> Fire Evacuation Plan Ground & First Floor Plans			
<b>SKILL</b>	<b>DATE</b>	<b>DRAWING PURPOSE</b>	<b>SCALE</b>
	04.08.23	CONSTRUCTION	1:100 @ A1
<b>DRAWING NO.</b> 2318-XX-003-FEP_C00			
			Pure Gym Ltd Town Centre House The Merston Centre Leeds LS2 8LY e: architecture@puregym.com w: www.puregym.com