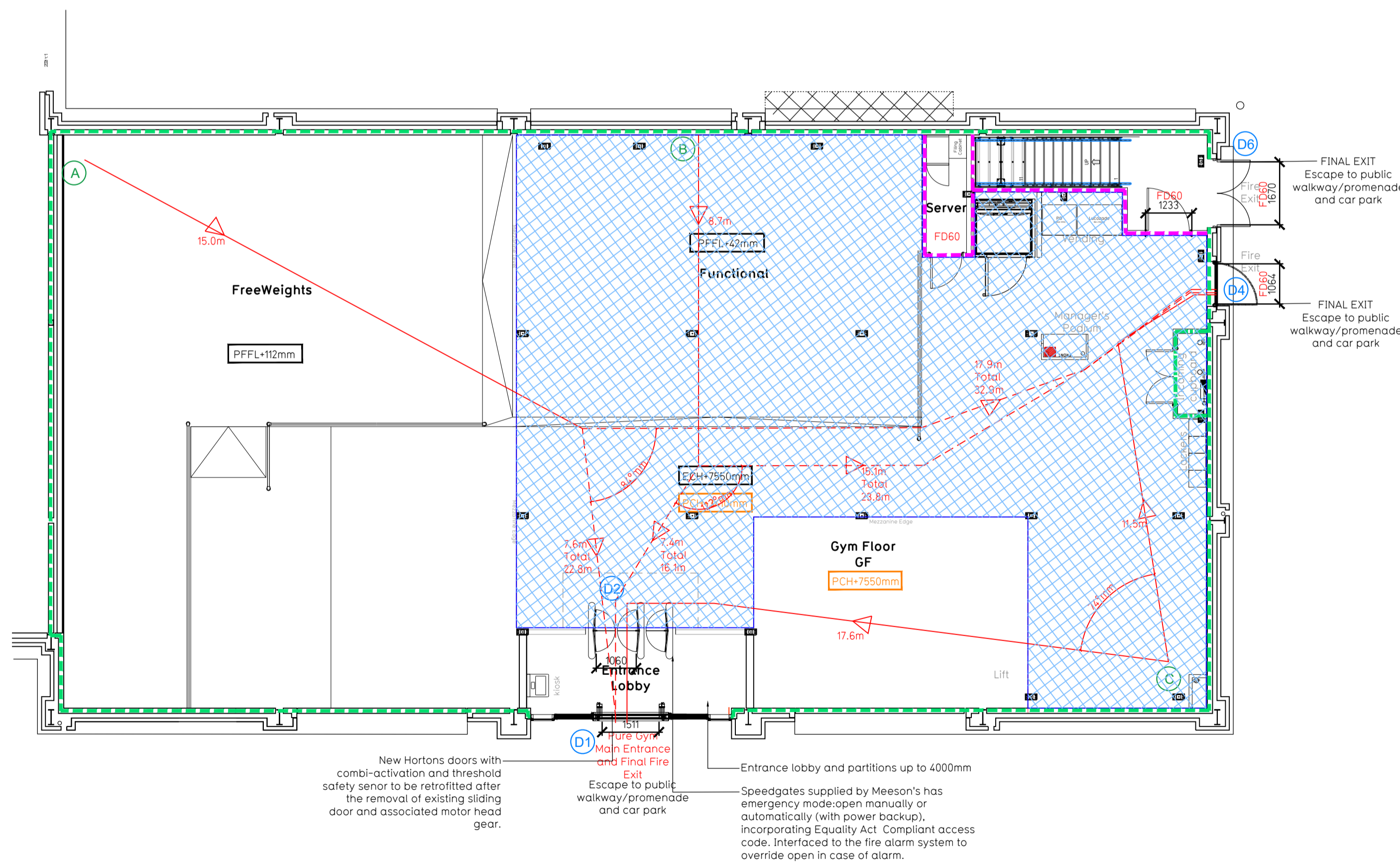


Proposed Mezzanine Floor Plan



Proposed Ground Floor Plan

NOTE:

- Proposals must comply with all acoustic, fire & building regulation requirements
- No dimensions are to be scaled from this drawing. The contractor is responsible for checking all dimensions on site

Clear head-room/ floor build-up key

ESH+XXXXmm	Existing Soffit Heights
PSh+XXXXmm	Proposed Soffit Heights
ECH+XXXXmm	Existing Ceiling Heights
PCH+XXXXmm	Proposed Ceiling Heights inclusive of floor build-ups
EBH+XXXXmm	Existing Beam Heights
PBH+XXXXmm	Proposed Heights to underside of beam including acoustic floor build-up
EFLL+XXXXmm	Existing Finished Floor Level build up
PFLL+XXXXmm	Proposed Finished Floor Level build up
EMH+XXXXmm	Existing Mechanical Heights
PMH+XXXXmm	Proposed Mechanical Heights

Key - Floor Build-ups

Free-weights =	40mm Sportec Style tile
	40mm ViBorb RF250 / 40 foam
	15mm ViBorb 20
	17mm ViBorb 10
Total =	112mm
Functional =	10mm Sportec Colour 15
	15mm ViBorb 20
	17mm ViBorb 10
Total =	42mm
Studio = Total 10mm	
	10mm Sportec Colour 15
	15mm ViBorb 20
	17mm ViBorb 10
Total =	42mm

Escape Route Widths

In line with Section 2.9.8 of the Technical Handbook - Non Domestic, the aggregate unobstructed width in mm of all escape routes from a room, or storey, should be at least 5.3 x the occupancy capacity of the room or storey.

Ground Floor

Aggregate Clear Opening Width of Escape Routes Calculation:
Final Fire Exit DR2, clear opening width = 1060mm
Final Fire Exit DR4, clear opening width = 1064mm

Total Aggregate Width for Ground Floor 2144mm (Less Largest Opening Width 1064mm from Fire Exit DR4) = 1060mm

Ground Floor Maximum Occupancy Capacity = 1060 / 5.3 = 200 people

Mezzanine Floor

Aggregate Clear Opening Width of Escape Routes Calculation:
Storey Exit DR7, leading to Final Fire Exit DR6 at GF level = 1065mm

Total Aggregate Width for Mezzanine Storey 1065mm

Mezzanine Floor Maximum Occupancy Capacity = 1065 / 5.3 = 200 people

Due to use of a single mean of escape from mezzanine level, occupancy from mezzanine level is restricted to 60 person in accordance with Section 2.9.7 of the Technical Handbook - Non Domestic.

Combined Occupancy Provision

Ground floor maximum occupancy:	200
Mezzanine floor maximum occupancy:	60
Total occupancy provision:	260

Based on PG existing occupancy data of comparable sites, the average total occupancy of a Pure Gym at this size will be unlikely to exceed 70 people, which is smaller than the max. no of 260 persons (see calculation above) and is therefore thought to meet with the Section 2.9 of Technical Handbook - Non Domestic.

Escape Distance and Angle of Divergence

Position A
Total escape distance to nearest Final Exit DR1 = 22.6m
Distance before divergence is 15.0m
A.O.D to be > (2.5 X 15.0) + 45 = 82.5°
Drawn A.O.D = 84° thus complies

Position B
Total escape to nearest Final Exit DR2 = 16.1m
Distance before divergence is 8.7m
A.O.D to be > (2.5 X 8.7) + 45 = 66.75°
Drawn A.O.D = 122° thus complies

Position C
Total escape to nearest Final Exit DR4 = 11.5m
The total escape distance is less than 15m and thus complies.

Position D
Total escape to nearest Final Exit DR7 = 11.4m
The total escape distance is less than 15m and thus complies.

Position E
Total escape to nearest Final Exit DR7 = 14.5m
The total escape distance is less than 15m and thus complies.

Position F
Total escape to nearest Final Exit DR7 = 9.8m
The total escape distance is less than 15m and thus complies.

Fire Evacuation Key

	Existing wall to achieve min 30 minute fire rating (suitability of wall to be confirmed on site by Pure Gym Main Contractor)		Fire Escape Route
	Existing wall to achieve min 60 minute fire rating (suitability of wall to be confirmed on site by Pure Gym Main Contractor)		Minimum Clear Widths
	New wall to achieve min of 30min fire rating		Exit No.
	New wall to achieve min of 60min fire rating		Letter indicates escape route to exit
	Protected areas: walls, floors, ceilings and doors to achieve 30minute fire resistant construction.		Escape Route
	Protected areas: walls, floors, ceilings and doors to achieve 60 minute fire resistant construction.		

Fire Alarm
LT Category Fire Alarm designed and installed to BS 5839. Smoke & heat detection / emergency lighting by specialist. Please refer to MSE engineer's drawings / specifications.

Escape Lighting
Emergency escape lighting designed and installed in accordance with BS 5266: Part 1. Please refer to MSE Engineer's drawings for final layout and specification.

Smoke Extract
Smoke Extract System to be designed and installed in accordance with BS 7344: Part 8. Please refer to MSE Engineer's drawings for final layout and specification.

Escape Signage and emergency lighting is CDP under the MSE specification. Details of contractors proposals to be provided to Building Control Approved Inspector and Fire Officer within the Contractors Proposals Package, Clause 1.4

Rev	Date	Description	Drawn/Checked
C01	08.11.22	Drawing pack revised to capture acoustic requirements	SK/RL
PROJECT TITLE			DRAWING TITLE
Gala, Water Retail Park Unit 3, Huddersfield Rd, Galashiel's, TD1 3AP			Fire Evacuation Plan Ground and Mezzanine Floor
DRAWING SCALE	DRAWING DATE	SCALE	DRAWING No.
RSP/IR	22.02.22	1:100 @ A1	003-FEP
DRAWING PURPOSE			Rev
CONSTRUCTION			C01

Pure Gym Ltd
Town Centre House
The Merrion Centre
Leeds
LS2 8LY

e: architecture@puregym.com
t: 0113 285 8787
w: www.puregym.com