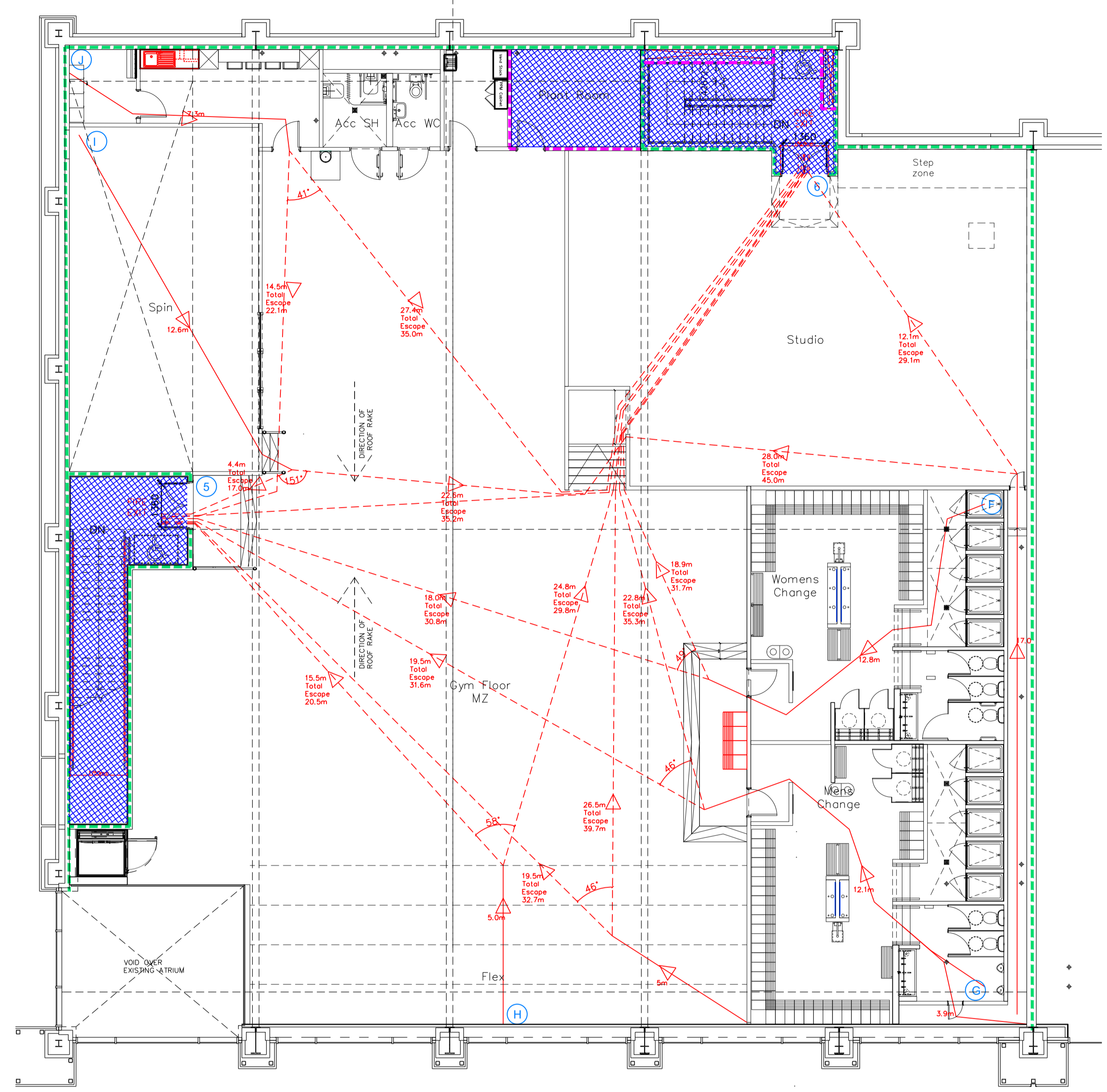
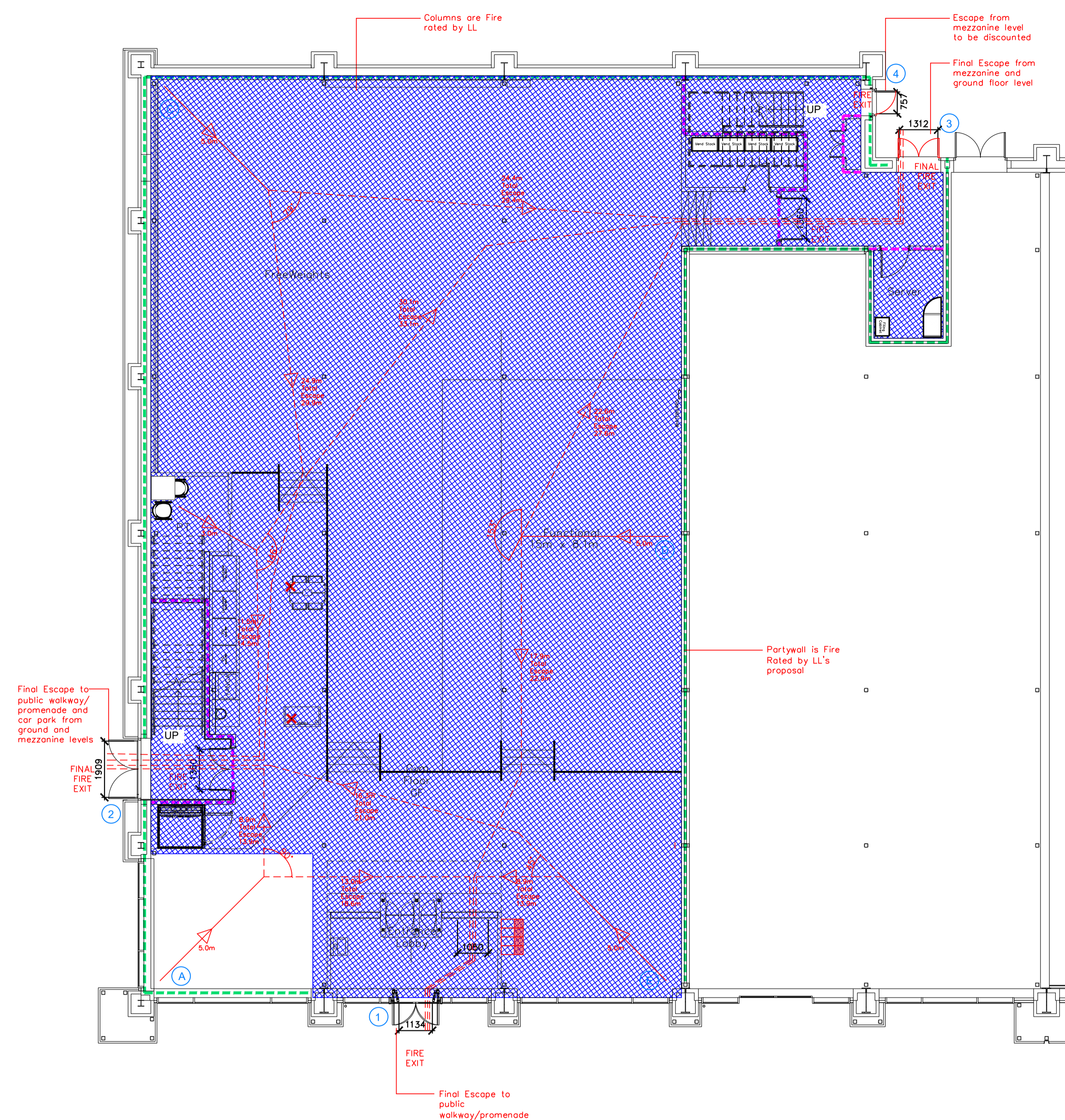


NOTE:
 - Proposals must comply with all acoustic, fire & building regulation requirements
 • No dimensions are to be scaled from this drawing. The contractor is responsible for checking all dimensions on site



Proposed Ground Floor Plan

Fire Evacuation Key	
	Existing wall to achieve min 30 minute fire rating (suitability of wall to be confirmed on site by Pure Gym Main Contractor)
	Existing wall to achieve min 60 minute fire rating (suitability of wall to be confirmed on site by Pure Gym Main Contractor)
	New wall to achieve min of 30min fire rating
	New wall to achieve min of 60min fire rating
	Protected areas: walls, floors, ceilings and doors to achieve 30minute fire resistant construction.
	Protected areas: walls, floors, ceilings and doors to achieve 60 minute fire resistant construction.
	Occupancy level within area
	Fire Escape Route
	Minimum Clear Widths
	Final Exit Door No.
	Travel from destination
	Shared Escape Route

Escape Route Widths:
 In line with Sections 3.21 & 3.22 of 'Approved Document Part B, Volume 2 - buildings other than dwellings' - the adjacent calculations provide justification for the clear opening widths for escape from each floor level/ room in accordance with Table 4 & Appendix C.

Ground Floor:
 Exit 1 Clear Opening Width = 1134mm (allows 236.8 persons to escape)
 Exit 2 Clear Opening Width = 1902mm (allows 391.8 persons to escape, largest opening to be discounted)
 Exit 3 Clear Opening Width = 1312mm (allows 272.4 persons to escape)
 Exit 4 Clear Opening Width = 757mm (opening to be discounted due to provision of other door)

Ground Floor Total Estimated Occupancy Capacity = 509 Persons

Mezzanine Floor:
 Exit 5 (Intermediate Exit) Clear Opening Width = 1360mm (allows 282 persons to escape, final exit from Exit No. 3 = 1312mm)
 Exit 6 (Intermediate Exit) Clear Opening Width = 1360mm (allows 282 persons to escape, final exit from Exit No. 2)

Fire Alarm:
 Fire Alarm designed and installed to BS 5839. Smoke & heat detection / emergency lighting by specialist. Please refer to M&E engineer's drawings / specifications.

Escape Lighting:
 Emergency escape lighting designed and installed in accordance with BS 5266: Part 1. Please refer to M&E Engineer's drawings for final layout and specification.

Escape Signage and emergency lighting is CDP under the M&E specification. Details of contractors proposals to be provided to Building Control Approved Inspector and Fire Officer within the Contractors Proposals Package, Clause 1.4

Rev	Date	Description	DRAWING TITLE	Drawn / Checked
001	21.02.22	Issue for RFP	Cheshunt Unit 7A, Brookfield RP, Cheshunt, EN8 0QE Fire Evacuation Plan Ground & Mezzanine Floor Plan	
002	21.02.22	Issue for RFP		
003	21.02.22	Issue for RFP		

Pure Gym Ltd
 Town Centre House
 The Merrion Centre
 Leeds
 LS2 8LY
 e: architecture@puregym.com
 t: 0113 285 8787
 w: www.puregym.com