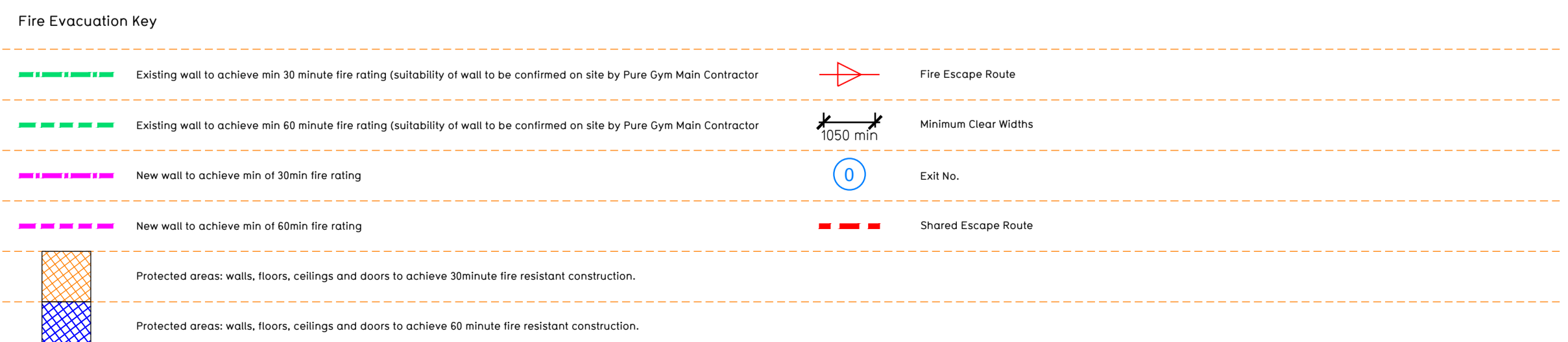
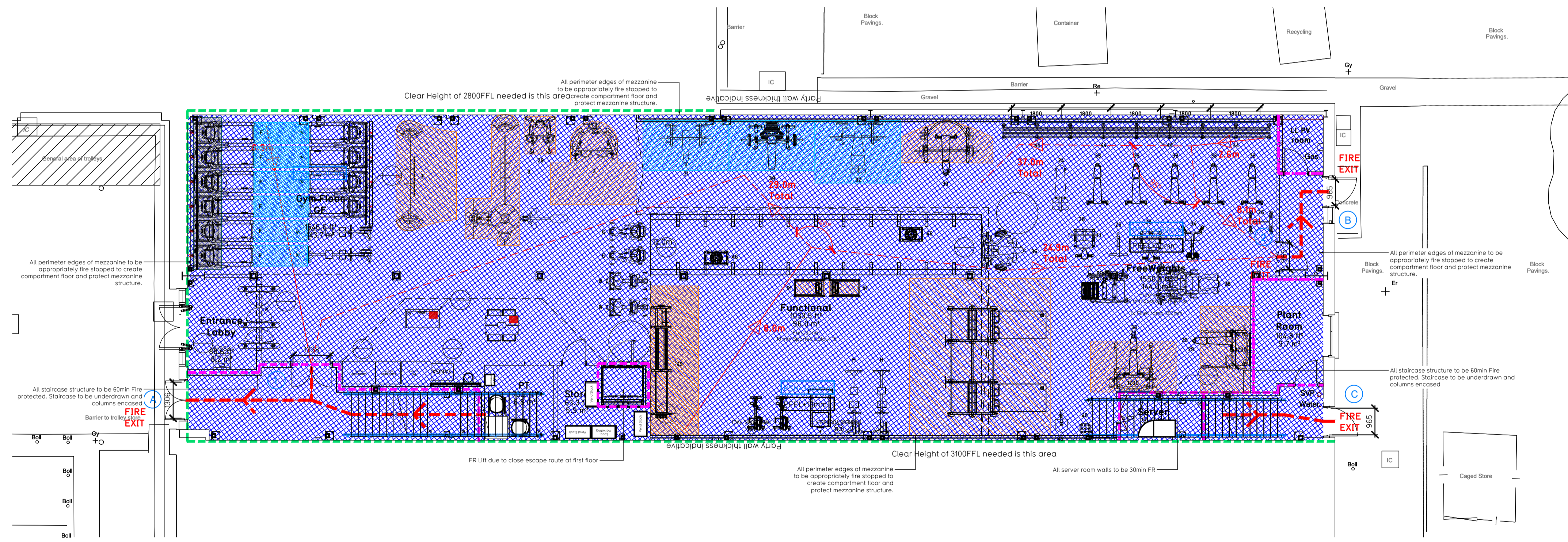
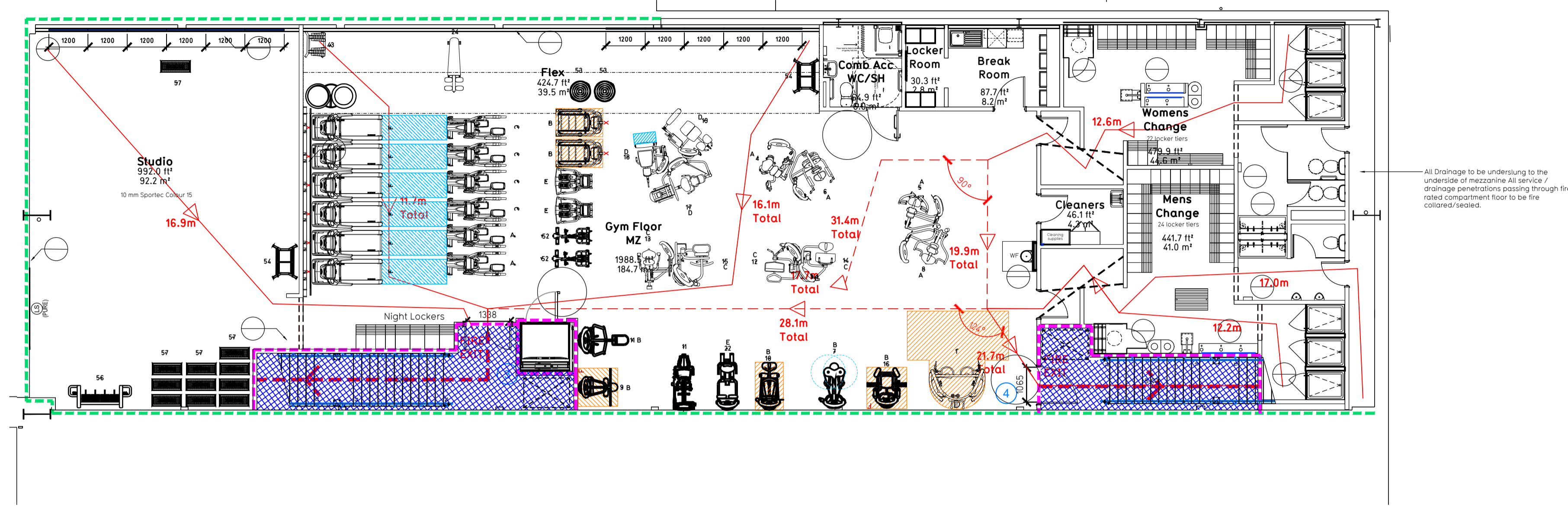


NOTE:

- Proposals must comply with all acoustic, fire & building regulation requirements
- No dimensions are to be scaled from this drawing. The contractor is responsible for checking all dimensions on site
- All proposals to be confirmed following site visit



Escape Route Widths:
 In line with Sections 3.21 & 3.22 of 'Approved Document Part B, Volume 2 - buildings other than dwellings' - the adjacent calculations provide justification for the clear opening widths for escape from each floor level/ room in accordance with Table 4 & Appendix C.

Ground Floor
 Final Exit A Fed by Storey Exit 1 Clear Opening Width = 1338mm (allows 277 persons to escape, largest opening to be discounted)
 Final Exit B Fed by Storey Exit 2 Clear Opening Width = 965mm (allows 170 persons to escape)
 Total Aggregate Width for Floor (Less Largest Opening Width of 1338mm from Storey Exit 1) = 965mm.

Mezzanine Floor
 Final Exit A Fed by Storey Exit 3 Clear Opening Width = 1338mm (allows 277 persons to escape, largest opening to be discounted)
 Final Exit C Fed by Storey Exit 4 Clear Opening Width = 1065mm (Escape occupancy limited by FINAL EXIT C clear opening width = 965mm, allows 110 persons to escape)
 Total Aggregate Width for Floor (Less Largest Opening Width of 1338mm from Storey Exit 4) = 965mm.

Total
 Ground Floor = 110 persons to escape
 Mezzanine Floor = 110 persons to escape
Total = 220 persons to escape

Based on NIA of 970sqft, the Puregym peak occupancy target = 99 persons
 Calculated using Puregym Fire Safety Occupancy Levels Forecast Tool.

The designed occupancy of the unit as calculated would allow a max. No. of 220 persons to escape, which is larger than the total estimated occupancy capacity of 169 persons and is therefore thought to meet with the Approved Document Part B. To allow free movement between the floors the occupancy has not been split 50/50%, but rather allows for occupancy based on gym stations and functions assuming that a high percentage of the total occupancy could be on a single floor at one time.

Fire Alarm
 Fire alarm designed and installed to BS 5839. Smoke & heat detection / emergency lighting by specialist. Please refer to MSE engineer's drawings / specifications.

Escape Lighting
 Emergency escape lighting designed and installed in accordance with BS 5266: Part 1. Please refer to MSE Engineer's drawings for final layout and specification.

Mezzanine Design CDP: New mezzanine structure including deck and column connections to be 60min FR using a boarded solution. Ceiling to be clear and flat ready to receive decoration. Service penetrations to be coordinated and suitably fire stopped. Contractor to submit proposals for design to be reviewed by building control and fire service. Escape Signage and emergency lighting is CDP under the MSE specification. Details of contractors proposals to be provided to Building Control Approved Inspector and Fire Officer within the Contractors Proposal Package. Clause 1.4

Rev	Date	Description	DRAWING TITLE		Drawn/Checked
			Stratford Upon Avon		
			Unit F1, Maynard Retail Park		
			Fire Escape Plan		
			Ground & Mezzanine Floor Plans		
DRAWN / CHECKED	DATE	SCALE	ADD No.	DRAWING No.	
HI/CS	22.02.2022	1:100 @ A1	2007	003	
CONSTRUCTION					Rev
					C00

Pure Gym Ltd
 Town Centre House
 The Merrion Centre
 Leeds
 LS2 9LY
 e: architecture@puregym.com
 t: 0113 285 8787
 w: www.puregym.com