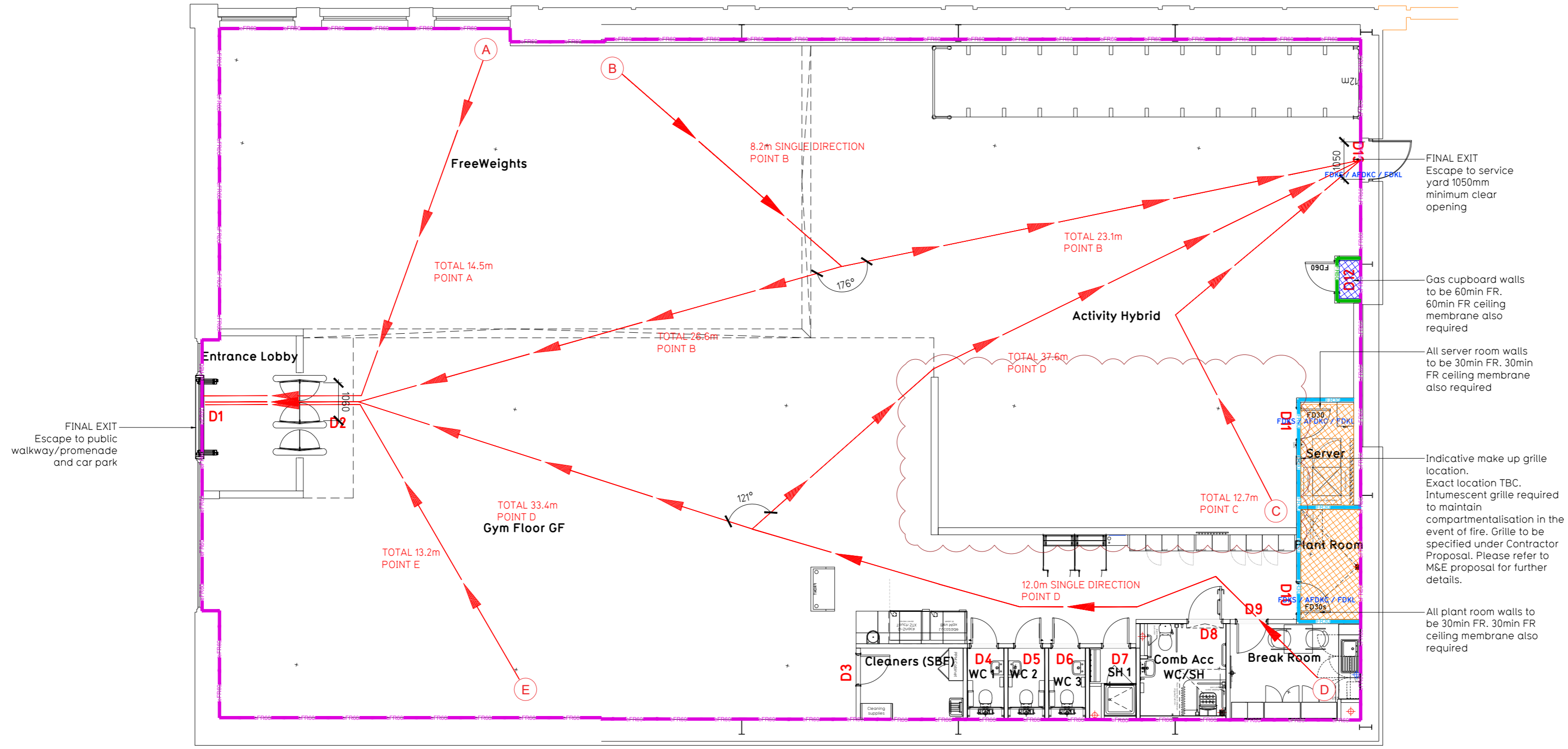


NOTE:

- Proposals must comply with all acoustic, fire & building regulation requirements
- No dimensions are to be scaled from this drawing. The contractor is responsible for checking all dimensions on site



GROUND FLOOR LEVEL

Fire Evacuation Key

	Existing wall to achieve min 30 minute fire rating (suitability of wall to be confirmed on site by Pure Gym Main Contractor)		Fire Escape Route
	Existing wall to achieve min 60 minute fire rating (suitability of wall to be confirmed on site by Pure Gym Main Contractor)		Minimum Clear Widths
	New wall to achieve min of 30min fire rating		Exit No.
	New wall to achieve min of 60min fire rating		Shared Escape Route
	Protected areas: walls, floors, ceilings and doors to achieve 30minute fire resistant construction.		Fire Door Rating - 30min. / 60min.
	Protected areas: walls, floors, ceilings and doors to achieve 60 minute fire resistant construction.		Fire Door Signage - Fire Door Keep Shut / Automatic Fire Door Keep Clear / Fire Door Keep Locked

Escape Route Widths:
In line with Sections 3.21 & 3.22 of 'Approved Document Part B, Volume 2 - buildings other than dwellinghouses' - the adjacent calculations provide justification for the clear opening widths for escape from each floor level/ room in accordance with Table 4 & Appendix C.

Ground Floor
Final Exit D1 limited by Internal Security Barrier D2 Clear Opening Width = 1060mm (allows 222 persons to escape, largest opening to be discounted)
Final Exit D13 Clear Opening Width = 1050mm (allows 220 persons to escape)

Based on NIA of 6638sqft, the Puregym max peak occupancy = 100 persons
Calculated using Puregym Fire Safety Occupancy Levels Forecast Tool.
The designed occupancy of the unit as calculated would allow a max. No. of 220 persons, which is larger than the total estimated occupancy target of 100 persons and is therefore thought to meet with the Approved Document Part B.

Fire Alarm
Fire Alarm designed and installed to BS 5839. Smoke & heat detection / emergency lighting by specialist. Please refer to M&E engineer's drawings / specifications.

Escape Lighting
Emergency escape lighting designed and installed in accordance with BS 5266: Part 1. Please refer to M&E Engineer's drawings for final layout and specification.

Fire Stopping
All services/drainage penetrations passing through fire rated compartment walls to be fire collared/sealed.

Escape Signage and emergency lighting is CDP under the M&E specification. Details of contractors proposals to be provided to Building Control Approved Inspector and Fire Officer within the Contractors Proposals Package, Clause 1.4

C01	27.06.24	Activity Wall changed to Jumbo Stud Wall.	HI/JM
Rev	Date	Description	Drawn/ Checked
PROJECT TITLE		DRAWING TITLE	
Spalding Unit 2 Westlode Street PE11 2AF		Fire Evacuation Plan Ground Floor	
DRAWN / CHECKED	DATE	SCALE	JOB No DRAWING No
HI/JM	22.04.24	1:100 @ A2	2325 003-FEP
DRAWING PURPOSE			Rev
CONSTRUCTION			C01
		Pure Gym Ltd Town Centre House The Merrion Centre Leeds LS2 8LY	
		e: architecture@puregym.com w: www.puregym.com	