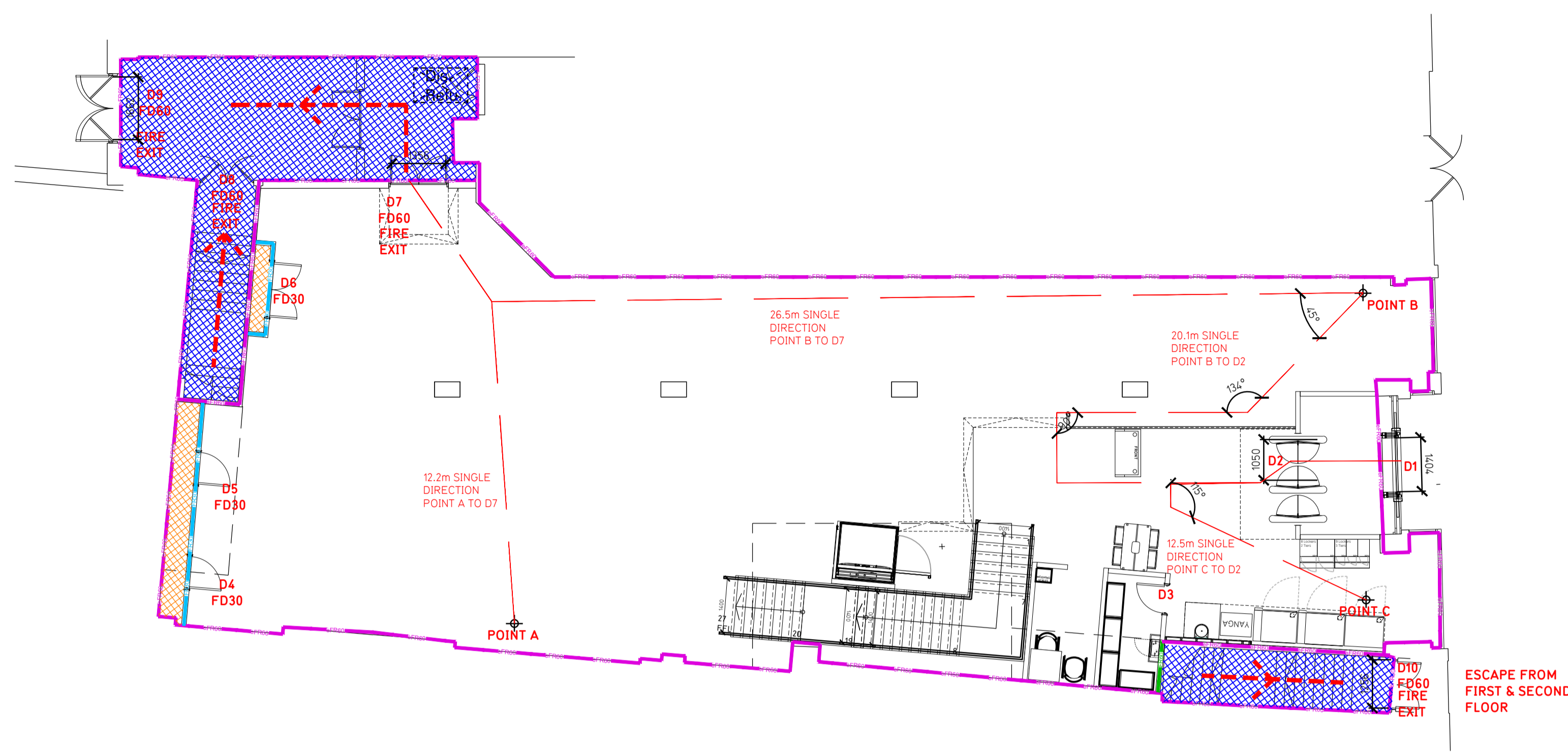
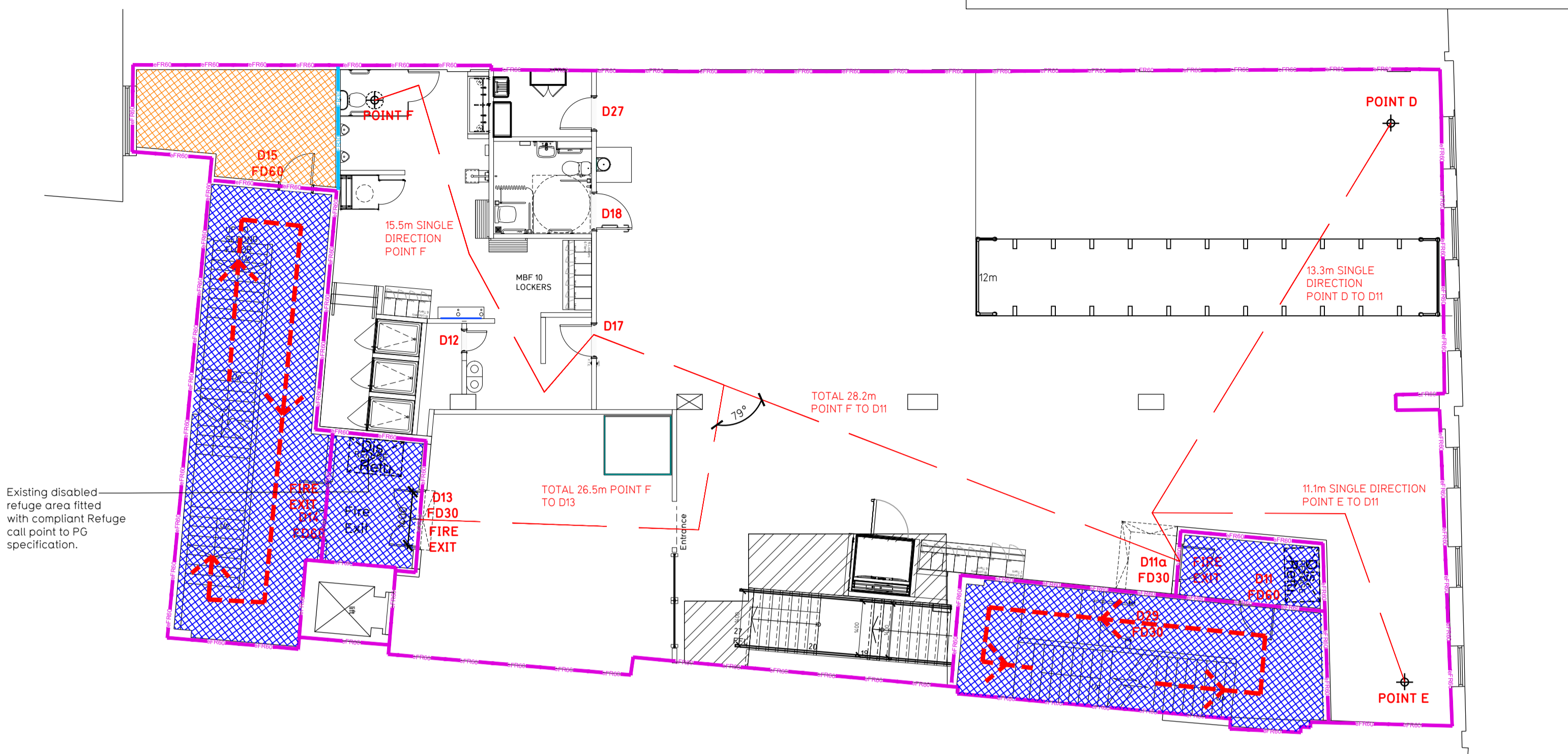


NOTE:

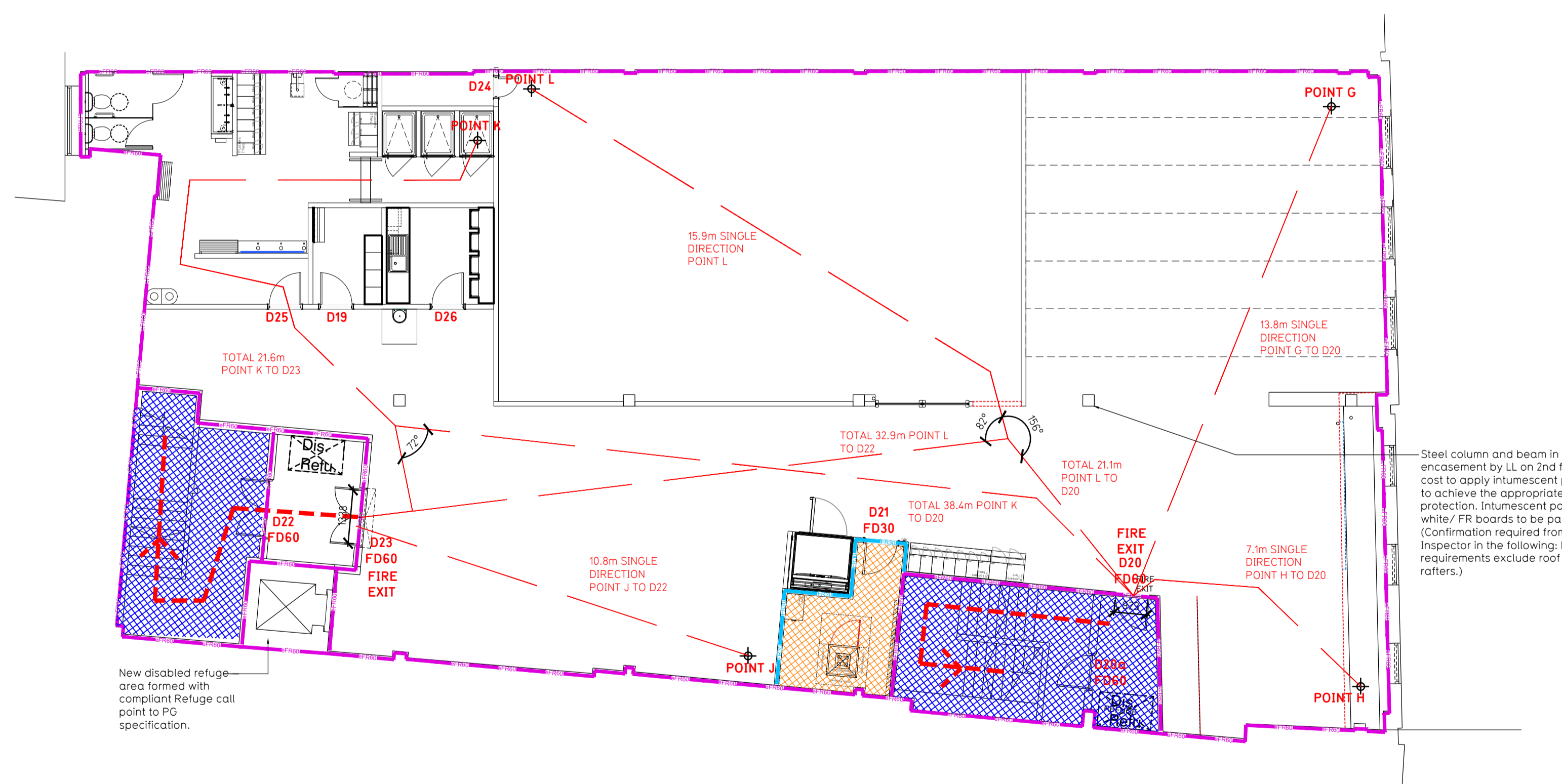
- Proposals must comply with all acoustic, fire & building regulation requirements
- No dimensions are to be scaled from this drawing. The contractor is responsible for checking all dimensions on site



Proposed Ground Floor Plan



Proposed First Floor Plan



Proposed Second Floor Plan

**Fire Evacuation Key**

	Existing wall to achieve min 30 minute fire rating (suitability of wall to be confirmed on site by Pure Gym Main Contractor)		Fire Escape Route
	Existing wall to achieve min 60 minute fire rating (suitability of wall to be confirmed on site by Pure Gym Main Contractor)		Minimum Clear Widths
	New wall to achieve min of 30min fire rating		Exit No.
	New wall to achieve min of 60min fire rating		Shared Escape Route
	Protected areas: walls, floors, ceilings and doors to achieve 30minute fire resistant construction.		Fire Door Rating
	Protected areas: walls, floors, ceilings and doors to achieve 60 minute fire resistant construction.		

**Escape Route Widths:**  
 In line with Sections 3.21 & 3.22 of 'Approved Document Part B, Volume 2 - buildings other than dwellings' - the adjacent calculations provide justification for the clear opening widths for escape from each floor/room in accordance with Table 4 & Appendix C.

**Ground Floor**  
 Final Fire Exit D1 @ Ground Floor = 1400mm is limited by Intermediate Fire D2 = 1050mm (allows 220 persons to escape).  
 Final Fire Exit D3 @ Ground Floor = 1620mm (allows 342 persons to escape & sized to allow for merged flow from Intermediate Fire Exits @ First Floor (D14) and @ 2nd Floor (D22). At Ground Floor this Final Fire Exit is limited by Intermediate Fire Exit D1 = 1350mm (allows 331 persons to escape) (Largest opening to be discounted)

**First Floor**  
 Final Fire Exit D10 1256 @ Ground Floor is limited by Intermediate Fire Exits D1 & D11 @ FF = 923mm (allows 110 persons to escape).  
 Final Fire Exit D9 1662mm is limited by Intermediate Fire Exit D13 @ FF = 1400mm (allows 290 persons to escape). (Largest opening to be discounted)

**Second Floor**  
 Final Fire Exit D10 1256mm @ Ground Floor is limited by Intermediate Fire Exit D20 = 923mm (allows 110 persons to escape).  
 Final Fire Exit D9 @ Ground Floor 1620mm is limited by Intermediate Fire Exit D23 = 1338mm (allows 277 persons to escape) is limited (Largest opening to be discounted)

**Total**  
 Ground = 220 persons to escape  
 First = 110 persons to escape  
 Second = 165 persons to escape  
 Total = 495 persons to escape

Based on a NIA of 10715sqm, the Puregym Peak Peak Occupancy Target = 289 Persons  
 Calculated using Puregym Fire Safety Occupancy Levels Forecast Tool

The designed occupancy of the unit as calculated below would allow a max. No. of 440 persons to escape, which is larger than the total estimated occupancy capacity of 289 Persons and is therefore thought to meet with the Approved Document Part B. To allow free movement between the floors the occupancy has not been split 50/50% but rather allows for occupancy based on gym stations and functions assuming that a high percentage of the total occupancy could be on a single floor at any one time.

**Fire Alarm**  
 Fire Alarm designed and installed to BS 5839. Smoke & heat detection / emergency lighting by specialist. Please refer to M&E engineer's drawings / specifications.

**Escape Lighting**  
 Emergency escape lighting designed and installed in accordance with BS 5266: Part 1. Please refer to M&E Engineer's drawings for final layout and specification.

Escape Signage and emergency lighting is CDP under the M&E specification. Details of contractors proposals to be provided to Building Control Approved Inspector and Fire Officer within the Contractors Proposals Package, Clause 1.4

Rev	Date	Description	Drawn/Checked
C01	14.02.24	Updated as per 001-GA	MJ/HB
<p><b>PROJECT TITLE</b> Wimbleton, The Broadway  <b>Unit 6, 17-27 The Broadway, London SW19 1PS</b>  <b>DRAWING NO.</b> 003-FEP  <b>SCALE</b> 1:100 @ A1  <b>DATE</b> 05.12.23  <b>REVISED</b> 2195  <b>DRAWING PURPOSE</b> CONSTRUCTION  <b>REV</b> C01</p>			

**PUREGYM**

Pure Gym Ltd  
 Town Centre House  
 The Merrion Centre  
 Leeds  
 LS2 8LY  
 e: architecture@puregym.com  
 t: 0113 285 8787  
 w: www.puregym.com