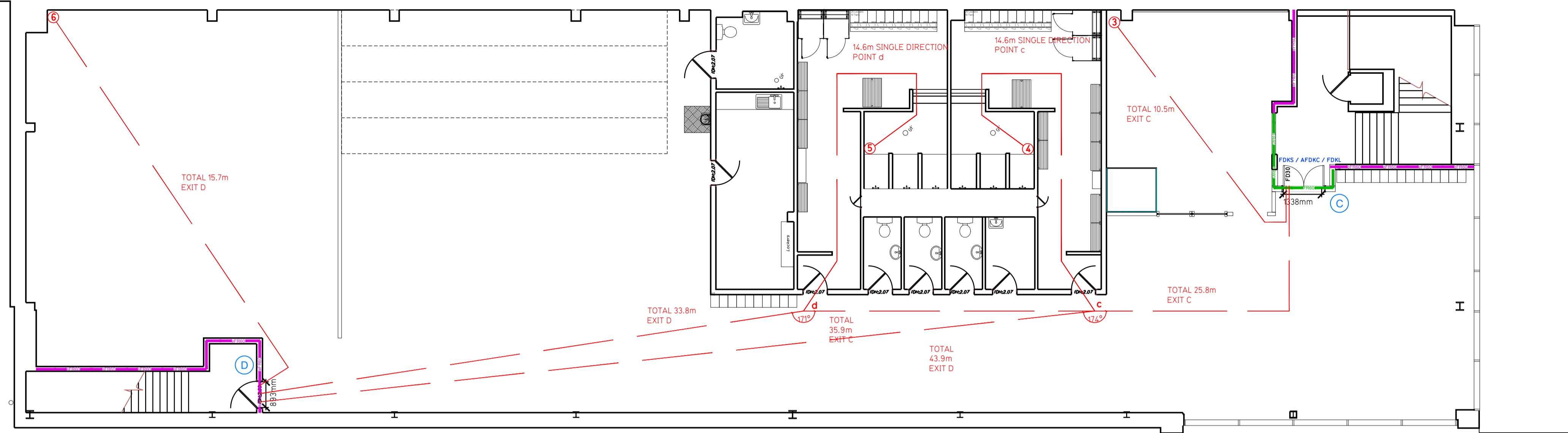
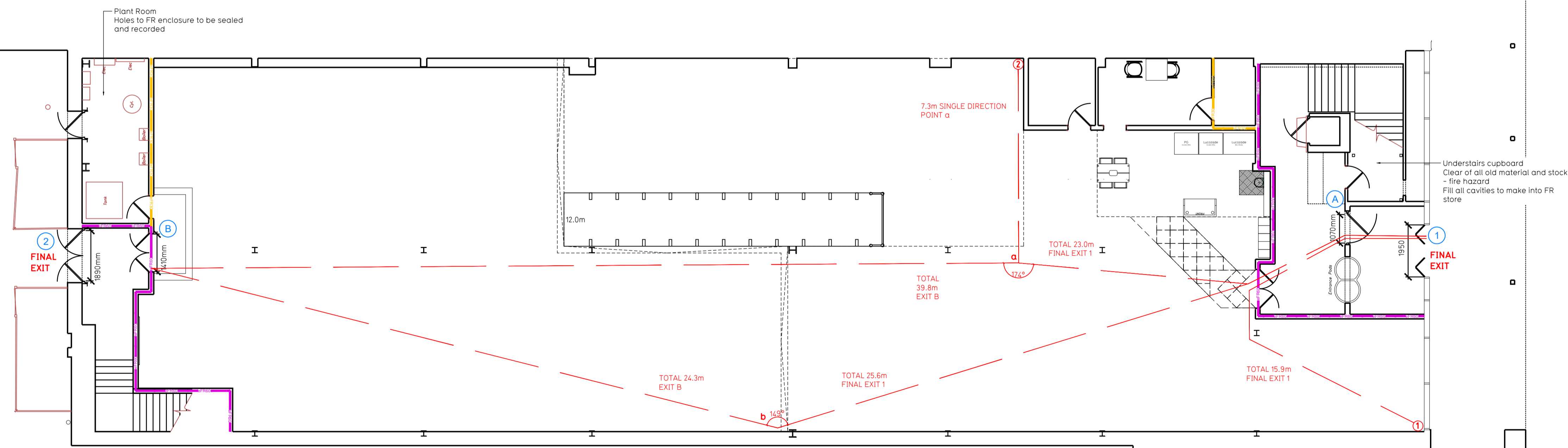


NOTE:

- Proposals must comply with all acoustic, fire & building regulation requirements
- No dimensions are to be scaled from this drawing. The contractor is responsible for checking all dimensions on site



Proposed Mezzanine Floor Plan



Proposed Ground Floor Plan

**Fire Evacuation Key**

	Existing wall to achieve min 30 minute fire rating (suitability of wall to be confirmed on site by Pure Gym Main Contractor)		Fire Escape Route
	Existing wall to achieve min 60 minute fire rating (suitability of wall to be confirmed on site by Pure Gym Main Contractor)		Minimum Clear Widths
	New wall to achieve min of 30min fire rating		Exit No.
	New wall to achieve min of 60min fire rating		Shared Escape Route
	Protected areas: walls, floors, ceilings and doors to achieve 30minute fire resistant construction.		Fire Door Rating - 30min. / 60min.
	Protected areas: walls, floors, ceilings and doors to achieve 60 minute fire resistant construction.		Fire Door Signage - Fire Door Keep Shut / Automatic Fire Door Keep Clear / Fire Door Keep Locked

**Escape Route Widths:**  
In line with Sections 3.21 & 3.22 of 'Approved Document Part B, Volume 2 - buildings other than dwellings' - the adjacent calculations provide justification for the clear opening widths for escape from each floor level/ room in accordance with Table 4 & Appendix C.

**Ground Floor**  
Final Exit 1 limited by Storey Exit A Clear Opening Width = 1070mm (allows 224 persons to escape)  
Final Exit 2 limited by Storey Exit B Clear Opening Width = 1400mm (allows 292 persons to escape, largest opening to be discounted)

**Mezzanine Floor**  
Storey Exit C limited by Storey Exit A Clear Opening Width = 1070mm (allows 224 persons to escape, largest opening to be discounted)  
Storey Exit D Clear Opening Width = 893mm (allows 110 persons to escape)

Based on NIA of 13773sqft, the Puregym max peak occupancy target = 222 persons  
Calculated using Puregym Fire Safety Occupancy Levels Forecast Tool.  
The designed occupancy of the unit as calculated would allow a max. No. of 334 persons, which is larger than the total estimated occupancy target of 222 persons and is therefore thought to meet with the Approved Document Part B. To allow free movement between the floors the occupancy has not been split 50/50% but rather allows for occupancy based on gym stations and function assuming that a high percentage of the total occupancy could be on a single floor at one time.

**Fire Alarm**  
Fire Alarm designed and installed to BS 5839. Smoke & heat detection / emergency lighting by specialist. Please refer to M&E engineer's drawings / specifications.

**Escape Lighting**  
Emergency escape lighting designed and installed in accordance with BS 5266-Part 1. Please refer to M&E Engineer's drawings for final layout and specification.

**Fire Stopping**  
All perimeter edges of mezzanine to be appropriately fire stopped to create compartment floor and protect mezzanine structure. All services/drainage penetrations passing through fire rated compartment floor to be fire colored/sealed.

Escape Signage and emergency lighting is CDP under the M&E specification. Details of contractors proposals to be provided to Building Control Approved Inspector and Fire Officer within the Contractors Proposals Package, Clause 1.4

Rev	Date	Description	Drawn/Checked

**Banbury Cross**  
Unit 1C, Banbury Cross Rd, Leamford Close, Banbury OX16 1LX

**Fire Evacuation Plan**  
Ground and Mezzanine Plans

DRAWN / CHECKED	DATE	SCALE	NO.	DRAWING NO.
HI/CS	05.02.24	1:100 @ A1	0175	003-FEP

**CONSTRUCTION**

Pure Gym Ltd  
Town Centre House  
The Merrion Centre  
Leamford  
LS2 8LY

e: architecture@puregym.com  
t: 0113 285 8787  
w: www.puregym.com