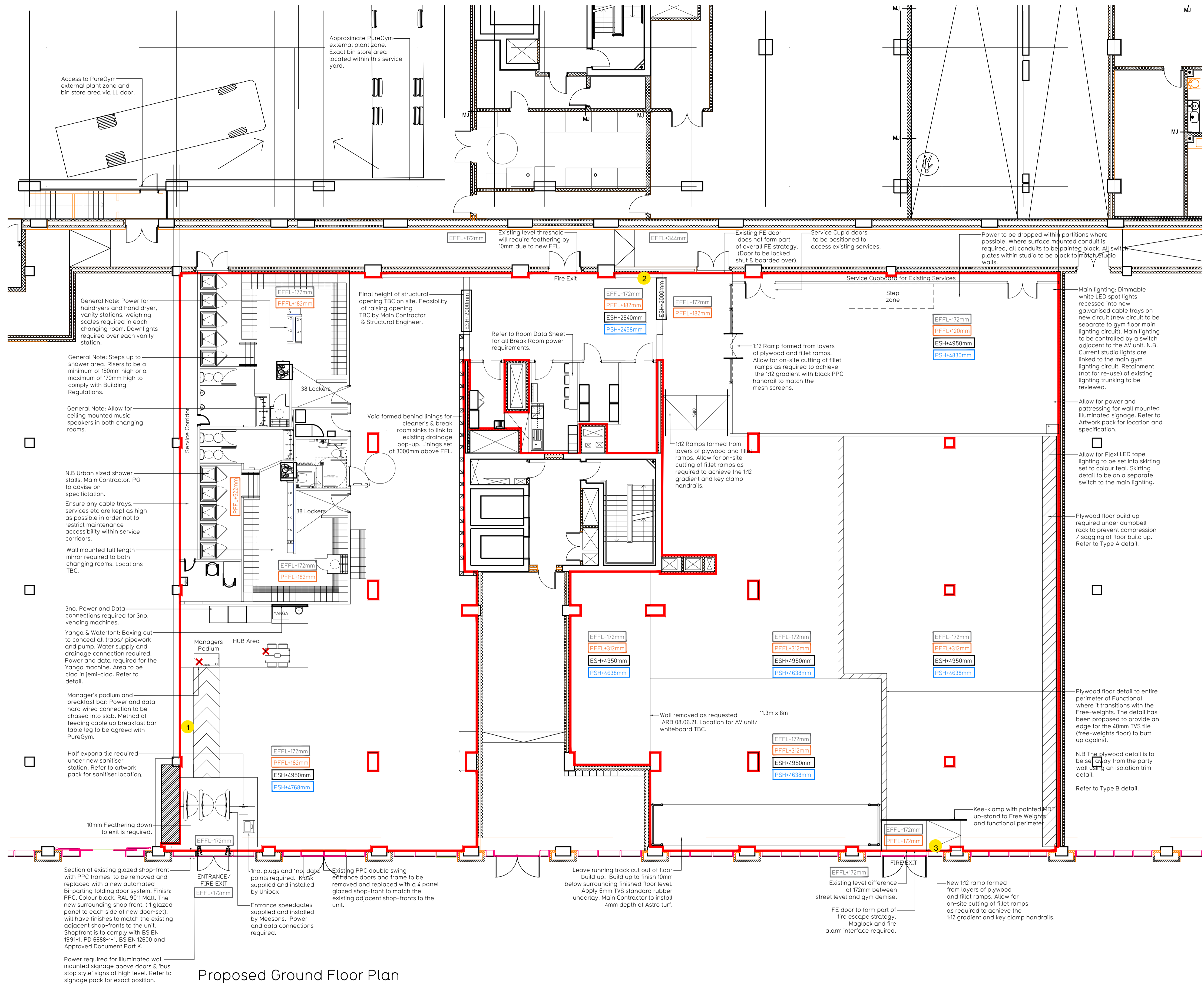


- NOTE:**
- Proposals must comply with all Acoustic, Fire, Building Regulation requirements.
 - No dimensions are to be scaled from this drawing.
 - The Contractor is responsible for checking all dimensions on site.

Clear head-room/ floor build-up key

- ESH+XXmm** Existing Soffit Heights
- EBH+XXmm** Existing Beam Heights
- PSH+XXmm** Proposed Soffit Heights including acoustic floor build-up
- PBH+XXmm** Proposed Heights to underside of beam including acoustic floor build-up
- EFFL+XXmm** Total existing floor build-up depth
- PFFL+XXmm** Total proposed floor build-up depth
- PDH+XXmm** Proposed clear head room to underside of duct including acoustic floor build-up
- PCH+XXmm** Proposed Ceiling Height



Proposed Ground Floor Plan

Gross Internal Area (Red Line)		Net Internal Area		Room Areas		Activity Areas	
Ground	1076.0 m ² / 11581.9 ft ²	Ground	1063.0 m ² / 11443.7 ft ²	Entrance Lobby	7.9 m ² / 85.2 ft ²	Electric/Plant Room (ELECTRIC)	93.5 m ²
Total	1076.0 m ² / 11581.9 ft ²	Total	1063.0 m ² / 11443.7 ft ²	PT	5.8 m ² / 62.4 ft ²	Mens Change	51.5 m ² / 554.8 ft ²
						Womens Change	48.2 m ² / 519.3 ft ²
				Break/Locker Room	10.0 m ² / 107.5 ft ²	Comb Acc WC/SH	6.1 m ² / 65.6 ft ²
				Server	3.4 m ² / 36.1 ft ²		
				Store	5.5 m ² / 59.0 ft ²		
				Cleaners	5.5 m ² / 59.3 ft ²		
						Gym Floor GF	386.9 m ² / 4185.1 ft ²
						Flex	37.3 m ² / 402.0 ft ²
						FreeWeights	195.1 m ² / 2099.7 ft ²
						Studio	16.9 m ² / 182.5 ft ²
						Functional	90.7 m ² / 976.8 ft ²

Rev	Date	Description	Drawn/Checked

PROJECT TITLE
Woolwich RAR
Royal Arsenal Riverside, Unit 5B & 6, OSD Block C/D

DRAWING TITLE
General Arrangement Floor Plan
Ground Floor Plan

DATE 26.01.22 | **SCALE** 1:100 @ A1 | **NO** 1065 | **DRAWING No.** 001 - GA

DRAWING PURPOSE TENDER

Rev T01

PUREGYM
Pure Gym Ltd
Town Centre House
The Merrion Centre
Leeds
LS2 8LY
e: architecture@puregym.com
t: 0113 285 8787
w: www.puregym.com