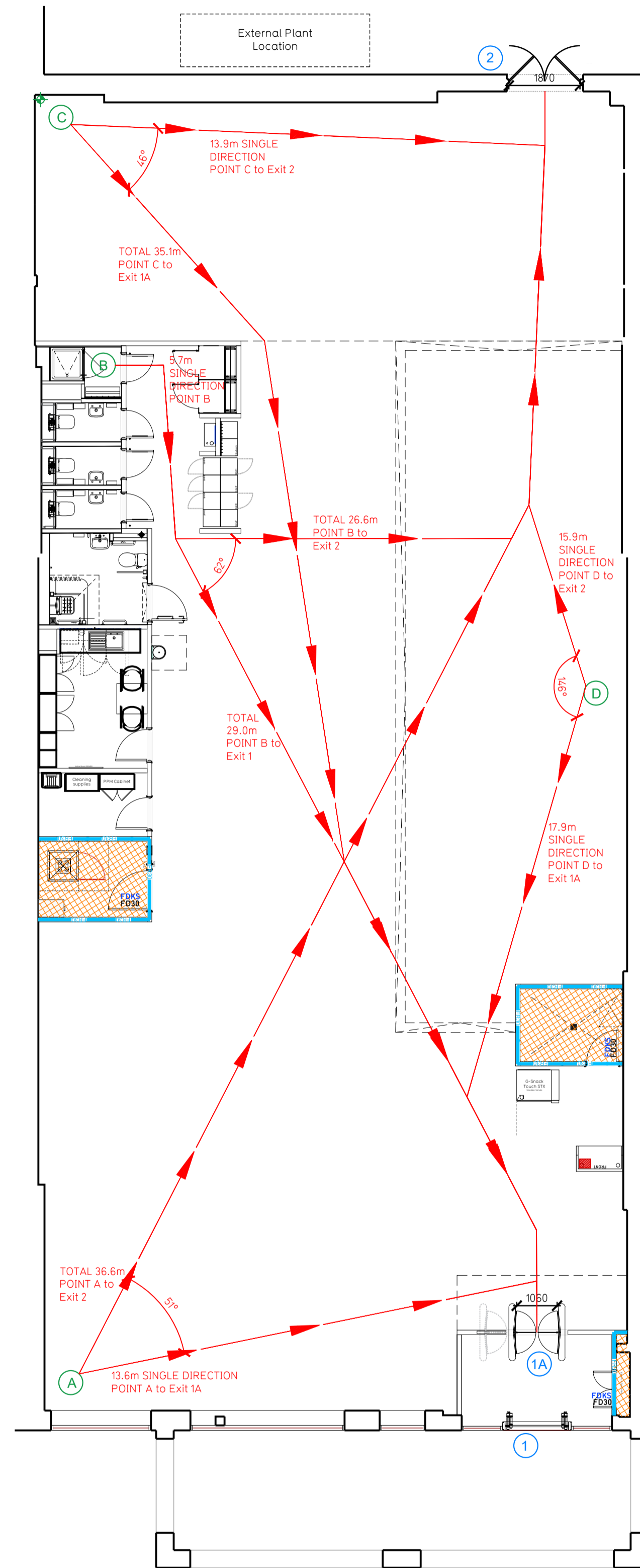


- NOTE:
- Proposals must comply with all acoustic, fire & building regulation requirements
  - No dimensions are to be scaled from this drawing. The contractor is responsible for checking all dimensions on site



Proposed Ground Floor Plan

Fire Evacuation Key	
	Existing wall to achieve min 30 minute fire rating (suitability of wall to be confirmed on site by Pure Gym Main Contractor)
	Existing wall to achieve min 60 minute fire rating (suitability of wall to be confirmed on site by Pure Gym Main Contractor)
	New wall to achieve min of 30min fire rating
	New wall to achieve min of 60min fire rating
	Protected areas: walls, floors, ceilings and doors to achieve 30minute fire resistant construction.
	Protected areas: walls, floors, ceilings and doors to achieve 60 minute fire resistant construction.
	Fire Escape Route
	Minimum Clear Widths 1050 mm
	Exit No.
	Shared Escape Route
	Fire Door Rating - 30min. / 60min.
	Fire Door Signage - Fire Door Keep Shut / Automatic Fire Door Keep Clear / Fire Door Keep Locked

**Escape Route Widths:**  
In line with Sections 3.21 & 3.22 of 'Approved Document Part B, Volume 2 - buildings other than dwellings' - the adjacent calculations provide justification for the clear opening widths for escape from each floor level/ room in accordance with Table 4 & Appendix C.

**Ground Floor**  
Exit 1A restricted by 1A, Exit 1A Clear Opening Width = 1060mm (allows 222 persons to escape)  
Exit 2 Clear Opening Width = 1870mm (allows 334 persons to escape / largest opening to be discounted)  
Total Aggregate Width for Floor (Less Largest Opening Width of 1870 from Exit 2 = 1060mm (allows 222 persons to escape))

**Total**  
Total = 222 persons to escape  
Based on a NIA of 5725 sqft, the Puregym Peak Occupancy Target = 100 Persons  
Calculated using Puregym Fire Safety Occupancy Levels Forecast Tool.

The designed occupancy of the unit as calculated below would allow a max. No. of 222 persons to escape, which is larger than the total estimated occupancy capacity of 100 Persons and is therefore thought to meet with the Approved Document Part B.

**Fire Alarm**  
Fire Alarm designed and installed to BS 5839. Smoke & heat detection / emergency lighting by specialist. Please refer to M&E engineer's drawings / specifications.

**Escape Lighting**  
Emergency escape lighting designed and installed in accordance with BS 5266: Part 1. Please refer to M&E Engineer's drawings for final layout and specification.

**Fire Stopping**  
All perimeter edges of fire protected rooms to be appropriately fire stopped to create compartment. All services/drainage penetrations passing through fire rated compartment floor to be fire collared/sealed.

Escape Signage and emergency lighting is CDP under the M&E specification. Details of contractors proposals to be provided to Building Control Approved Inspector and Fire Officer within the Contractors Proposals Package, Clause 14

Rev	Date	Description	Drawn/Checked

<b>PureGym Wantage</b>		<b>Fire Evacuation Plan</b>	
Unit 9, Kings Park, Wantage OX12 9AJ		Ground Floor Plan	
<b>DRAWING NO.</b>	<b>DATE</b>	<b>SCALE</b>	<b>DRAWING No.</b>
HI/IB	10.06.24	1:100 @ A1	003-FEP
<b>DRAWING PURPOSE</b>			<b>Rev</b>
<b>CONSTRUCTION</b>			C00

Pure Gym Ltd  
 Town Centre House  
 The Merlion Centre  
 Leeds  
 LS2 8LY  
 e: architecture@puregym.com  
 t: 0113 285 8787  
 w: www.puregym.com