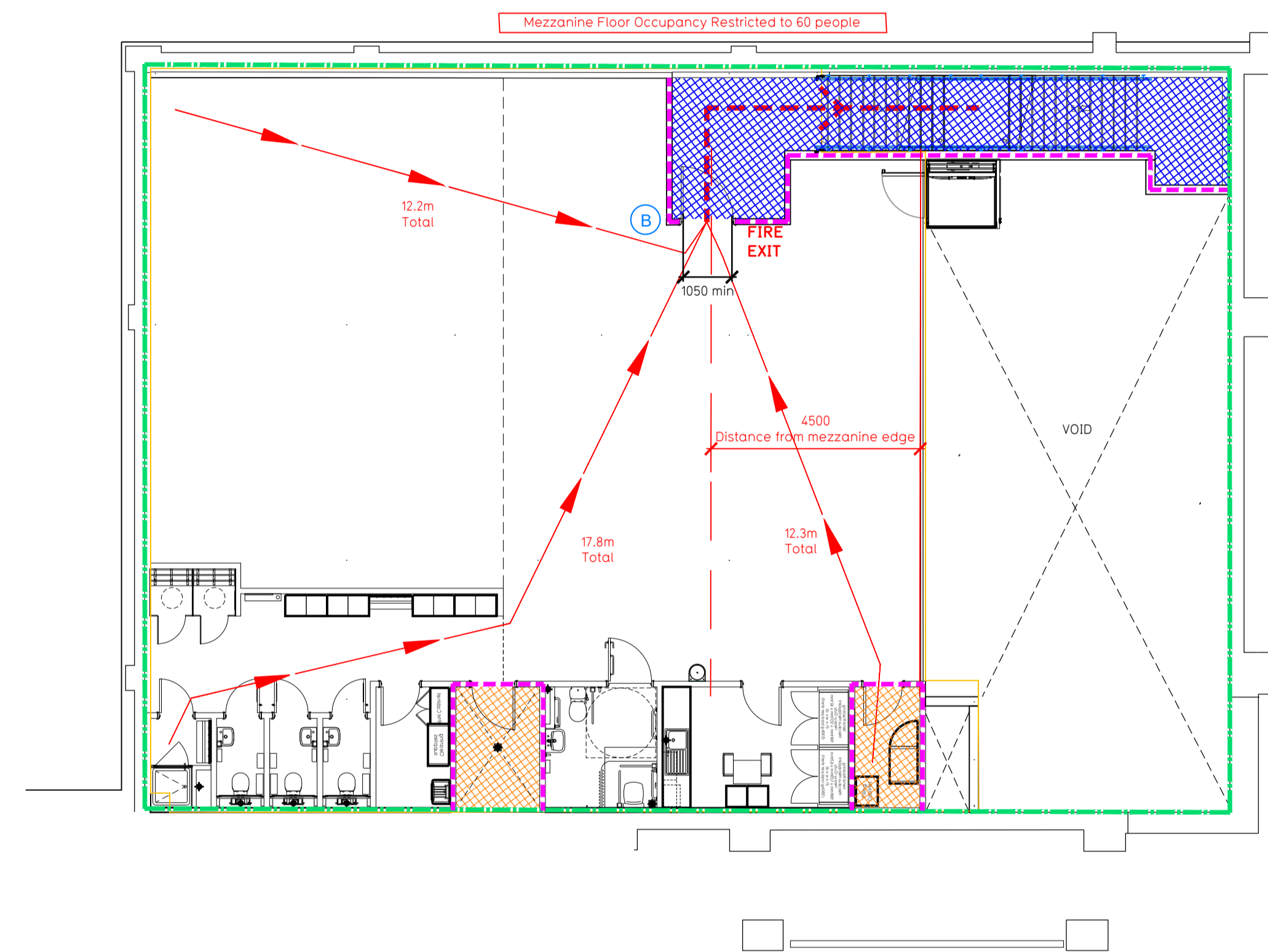
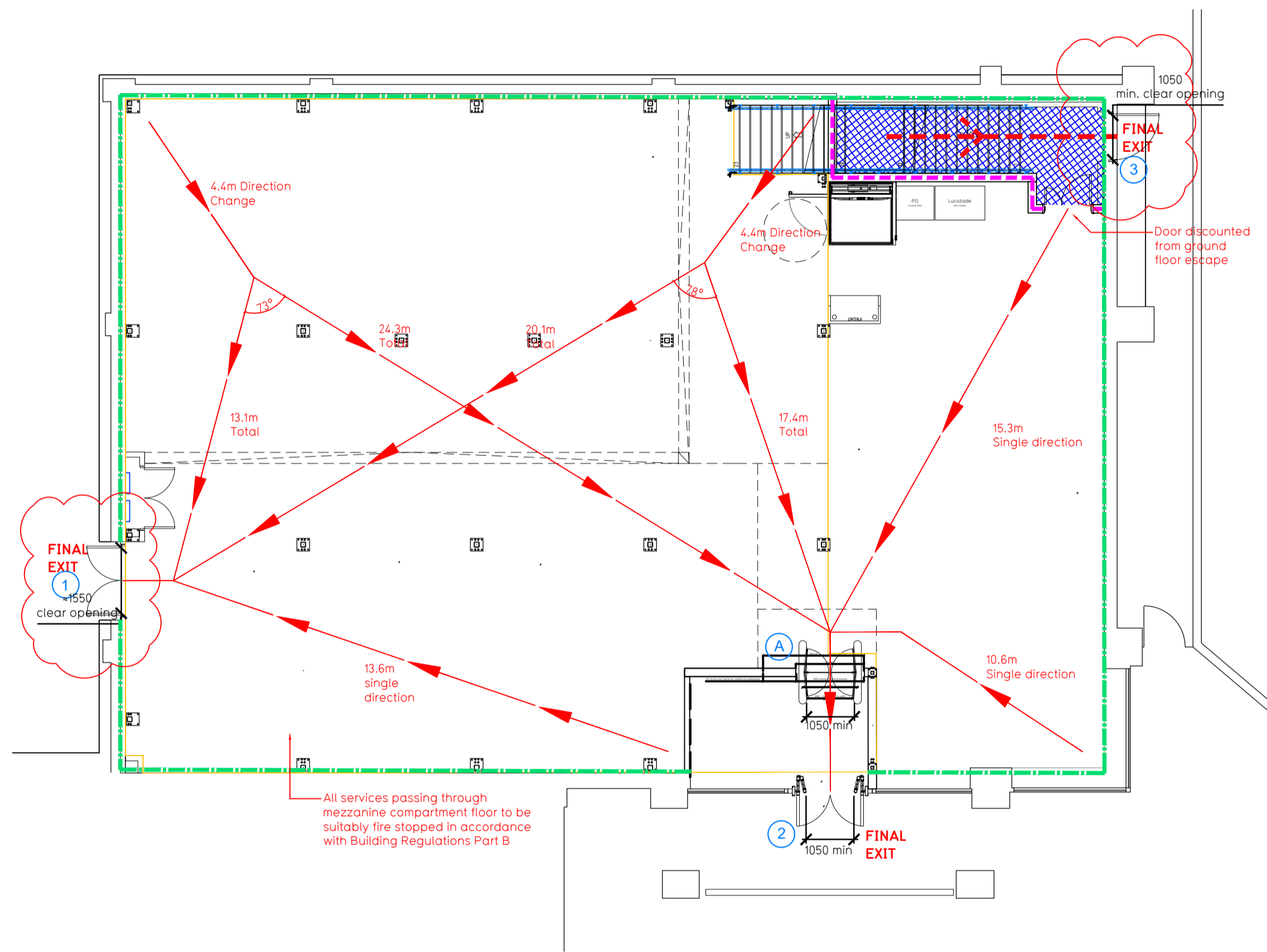
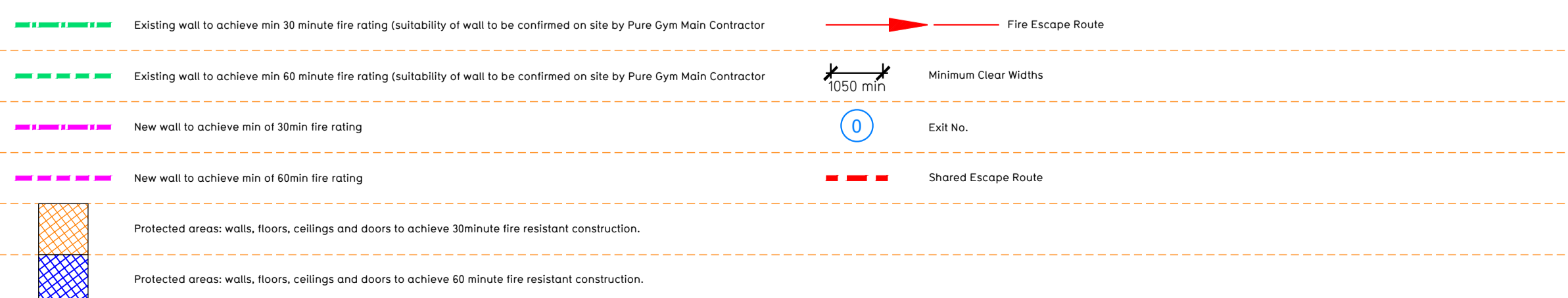


- NOTE:
- Proposals must comply with all acoustic, fire & building regulation requirements
  - No dimensions are to be scaled from this drawing. The contractor is responsible for checking all dimensions on site



Fire Evacuation Key



**Escape Route Widths:**  
In line with Sections 3.21 & 3.22 of 'Approved Document Part B, Volume 2 - buildings other than dwellings' - the adjacent calculations provide justification for the clear opening widths for escape from each level/room in accordance with Table 4.6, Appendix C.

**Estimated Occupancy**  
Ground Floor Estimated Occupancy 110 Persons  
Mezzanine Estimated Occupancy 60 Persons  
Total Estimated Max Occupancy 170 Persons

**Ground Floor**  
Final Exit 1 Clear Opening Width = 1550mm approx. (allows 320 persons to escape, largest opening to be discounted)  
Final Exit 2 Clear Opening Width = 1050mm (allows 220 persons to escape, however restricted by clear width of Storey Exit A)  
Storey Exit A Clear Opening Width = 1050mm (allows 220 persons to escape)

Total Aggregate Width for Floor (Less Largest Opening Width of 1550mm from Exit 1) = 1050mm

Exit 4 provides a min. width of 1050mm and would allow a max. No. of 240 persons to escape, which is larger than the estimated ground floor occupancy capacity of 110 Persons and is therefore thought to meet with the Approved Document Part B.

**Mezzanine**  
Final Exit 3 Clear Opening Width = 850mm (allows 110 persons to escape)  
Storey Exit B Clear Opening Width = 1050mm (allows 220 persons to escape, however restricted by clear width of Final Exit 3)

Exit B provides a min. width of 1050mm and would allow a max. No. of 220 persons to escape. Final Exit 3 provides a min. width of 1050mm and would allow a max. No. of 220 persons to escape. This limits the escape capacity from mezzanine to 220 people. This exceeds the capped maximum occupancy of 60 persons due the mezzanine only having a single staircase as its form of vertical escape and is therefore thought to meet with the Approved Document Part B.

**Fire Alarm**  
Fire Alarm designed and installed to BS 5839. Smoke & heat detection / emergency lighting by specialist. Please refer to MSE engineer's drawings / specifications.

**Escape Lighting**  
Emergency escape lighting designed and installed in accordance with BS 5266: Part 1. Please refer to MSE Engineer's drawings for final layout and specification.

Escape Signage and emergency lighting is CDP under the MSE specification. Details of contractors proposals to be provided to Building Control Approved Inspector and Fire Officer within the Contractors Proposals Package, Clause 1.4

Rev	Date	Description	Drawn/Checked
C04	24.01.23	Occupancy & door widths updated.	SKI/MM
C03	23.01.23	Mezz. columns updated.	SKI/MM
C02	18.01.23	Mezz. columns & staircase updated. Plant Rm. & Acc. WC/Sh relocated.	SKI/MM
C01	16.01.23	Ancillary block revised.	SKI/MM

PROJECT TITLE		DRAWING TITLE	
Heator Retail Park Heator, DE75 7EX		Fire Evacuation Plan Ground and Mezzanine Floor Plans	
DESIGNED BY	DATE	SCALE	DRAWING No.
SS/IR	25.07.2022	1:100 @ A1	1223
DRAWING PURPOSE		SCALE	Rev
CONSTRUCTION		1223	003-FEP
			C04

Pure Gym Ltd  
Town Centre House  
The Merrion Centre  
Leeds  
LS2 8LY  
e: architecture@puregym.com  
t: 0113 285 8787  
w: www.puregym.com