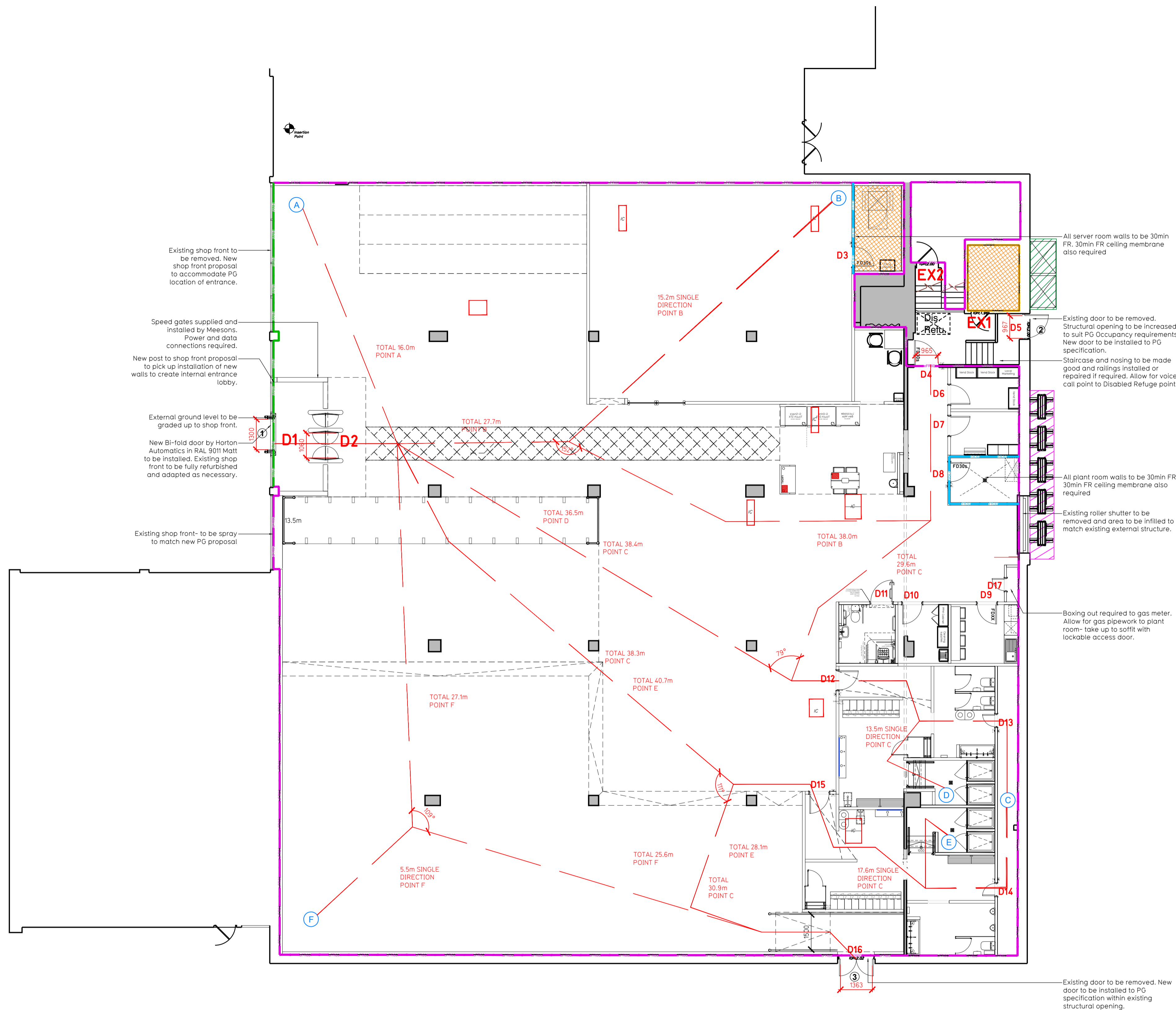


NOTE:

- Proposals must comply with all acoustic, fire & building regulation requirements
- No dimensions are to be scaled from this drawing. The contractor is responsible for checking all dimensions on site



GROUND FLOOR LEVEL - General Arrangement Plan 1:100

Fire Evacuation Key	
	Existing wall to achieve min 30 minute fire rating (suitability of wall to be confirmed on site by Pure Gym Main Contractor)
	Existing wall to achieve min 60 minute fire rating (suitability of wall to be confirmed on site by Pure Gym Main Contractor)
	New wall to achieve min of 30min fire rating
	New wall to achieve min of 60min fire rating
	Protected areas: walls, floors, ceilings and doors to achieve 30minute fire resistant construction.
	Protected areas: walls, floors, ceilings and doors to achieve 60 minute fire resistant construction.
	Fire Escape Route
	Minimum Clear Widths
	Exit No.
	Shared Escape Route
	Fire Door Rating - 30min. / 60min.
	Fire Door Signage - Fire Door Keep Shut / Automatic Fire Door Keep Clear / Fire Door Keep Locked

**Escape Route Widths:**  
 In line with Sections 3.21 & 3.22 of 'Approved Document Part B, Volume 2 - buildings other than dwellings' - the adjacent calculations provide justification for the clear opening widths for escape from each floor level/ room in accordance with Table 4 & Appendix C.

**Ground Floor**  
 Exit D1 Clear Opening Width = 1300mm but is limited by D2 Clear Opening Width = 1060mm (allows 222 persons to escape)  
 Exit D8 Clear Opening Width = 1363mm (allows 182 persons to escape)  
 Exit D4 Clear Opening Width = 950mm (allows 110 persons to escape - largest opening to be discounted)

Total Aggregate Width for Floor (Less Largest Opening Width of 1363mm from D8) = 2025mm  
 Total Occupancy Number when largest exit is discounted D8 = 332 persons.  
 Ground Floor Total Estimated Occupancy Capacity = 486 Persons

D2 provides a min. width of 1060mm and would allow a max. No. of 222 persons to escape, which is larger than the total estimated occupancy capacity of 186 Persons and is therefore thought to meet with the Approved Document Part B.

**Fire Alarm**  
 Fire Alarm designed and installed to BS 5839. Smoke & heat detection / emergency lighting by specialist. Please refer to M&E engineer's drawings / specifications.

**Escape Lighting**  
 Emergency escape lighting designed and installed in accordance with BS 5266: Part 1. Please refer to M&E Engineer's drawings for final layout and specification.

**Fire Stopping**  
 All perimeter edges of mezzanine to be appropriately fire stopped to create compartment floor and protect mezzanine structure. All services/drainage penetrations passing through fire rated compartment floor to be fire collared/sealed.

Escape Signage and emergency lighting is CDP under the M&E specification. Details of contractors proposals to be provided to Building Control Approved Inspector and Fire Officer within the Contractors Proposals Package, Clause 14

Rev	Date	Description	DRAWING TITLE		Drawn/Checked
			COALVILLE Unit 30, Belvoir Centre, Coalville		Fire Evacuation Plan Ground Floor
SKJM	26.02.24		SCALE 1:100 @A1	ISS No. 2357	DRAWING No. 003-FEP
DRAWING PURPOSE CONSTRUCTION					Rev C00

Pure Gym Ltd  
 Town Centre House  
 The Merrion Centre  
 Leeds  
 LS2 8LY  
 e: architecture@puregym.com  
 t: 0113 285 8787  
 w: www.puregym.com