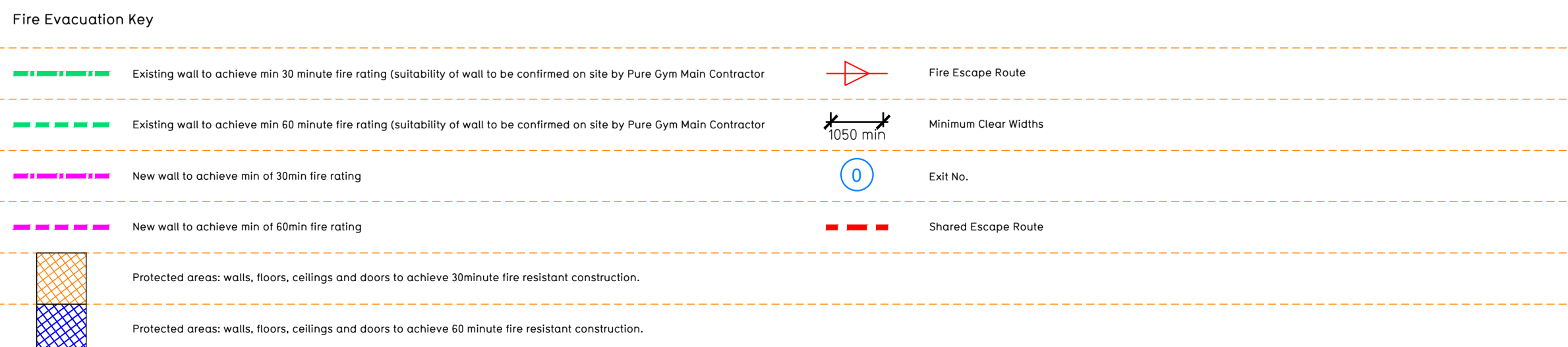
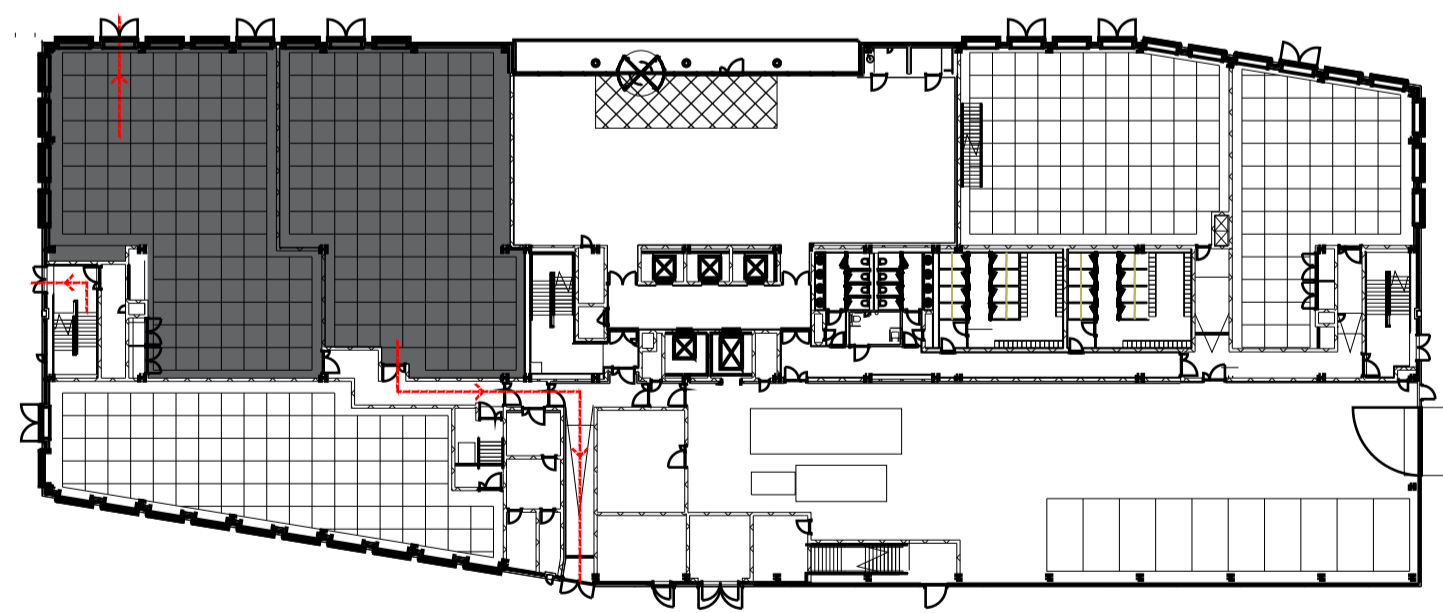
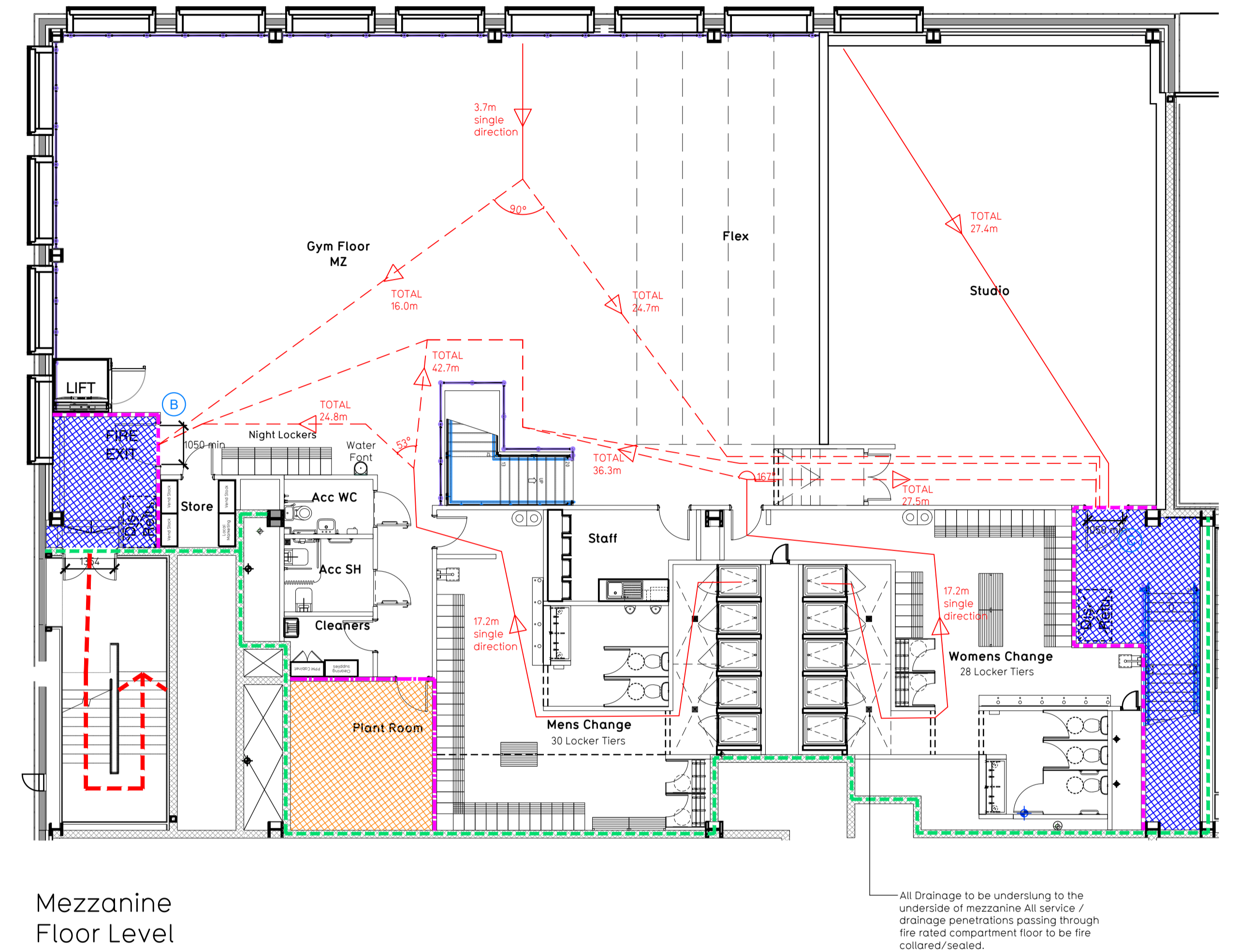
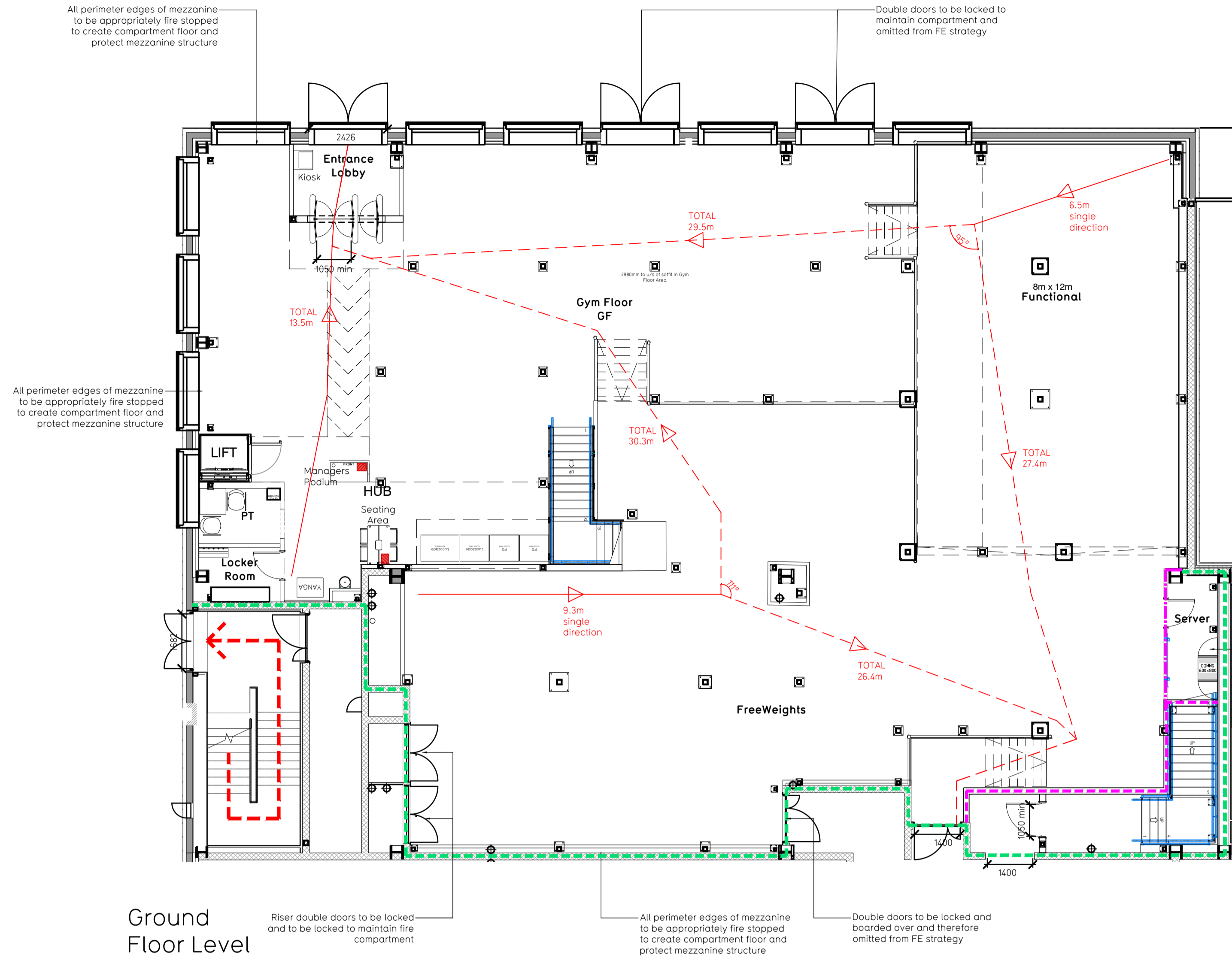


NOTE:

- Proposals must comply with all acoustic, fire & building regulation requirements
- No dimensions are to be scaled from this drawing. The contractor is responsible for checking all dimensions on site



**Escape Route Widths:**  
 In line with Sections 3.21 & 3.22 of 'Approved Document Part B, Volume 2 - buildings other than dwellinghouses' - the adjacent calculations provide justification for the clear opening widths for escape from each floor level/ room in accordance with Table 4.4 & Appendix C.

**Ground Floor**  
 Final Exit 1 Clear Opening Width = 1050mm (allows 220 persons to escape; largest opening to be discounted)  
 Final Exit 3 Clear Opening Width = 1400mm (allows 190 persons to escape)  
 Total Aggregate Width for Floor (Less Largest Opening Width of 1400mm from FINAL EXIT 1) = 1050mm

**Mezzanine Floor**  
 Final Exit A Fed by Storey Exit C Clear Opening Width = 1050mm (allows 220 persons to escape)  
 Final Exit 4 Fed by Storey Exit B Clear Opening Width = 1050mm (allows 220 persons to escape; largest opening to be discounted)  
 Total Aggregate Width for Floor (Less Largest Opening Width of 1050mm from STOREY EXIT B) = 1050mm

**Total**  
 Ground Floor = 220 persons to escape  
 Mezzanine Floor = 220 persons to escape  
 Total = 440 persons to escape

Based on a NIA of 12435sqft, the Puregym peak Occupancy target = 198 persons  
 Calculated using Puregym Fire Safety Occupancy Levels Forecast Tool.

The designed occupancy of the unit as calculated would allow a max. No. of 440 persons to escape, which is larger than the total estimated occupancy capacity of 198 persons and is therefore thought to meet with the Approved Document Part B. To allow free movement between the floors the occupancy has not been split 50/50 but rather allows for occupancy based on gym stations and functions assuming that a high percentage of the total occupancy could be on a single floor at one time.

**Fire Alarm**  
 Fire Alarm designed and installed to BS 5839. Smoke & heat detection / emergency lighting by specialist. Please refer to M&E engineer's drawings / specifications.

**Escape Lighting**  
 Emergency escape lighting designed and installed in accordance with BS 5266: Part 1. Please refer to M&E Engineer's drawings for final layout and specification.  
 Escape Signage and emergency lighting is CDP under the M&E specification. Details of contractors proposals to be provided to Building Control Approved Inspector and Fire Officer within the Contractors Proposals Package, Clause 14.

Rev	Date	Description	Drawn/Checked

**PROJECT TITLE**  
 Manchester, First Street Units 1B & 1C, First Street, Greater Manchester, M15 4FN  
**DRAWING TITLE**  
 Fire Evacuation Plan Ground & Mezzanine Floor

**DRAWING CODE**  
 HI/IR  
**DATE**  
 14.02.22  
**SCALE**  
 1:100 @ A1  
**PROJECT NO.**  
 003 - FEP  
**DRAWING NO.**  
 C00

**CONSTRUCTION**

Pure Gym Ltd  
 Town Centre House  
 The Merrion Centre  
 Leeds  
 LS2 8LY  
 e: architecture@puregym.com  
 t: 0113 285 8787  
 w: www.puregym.com