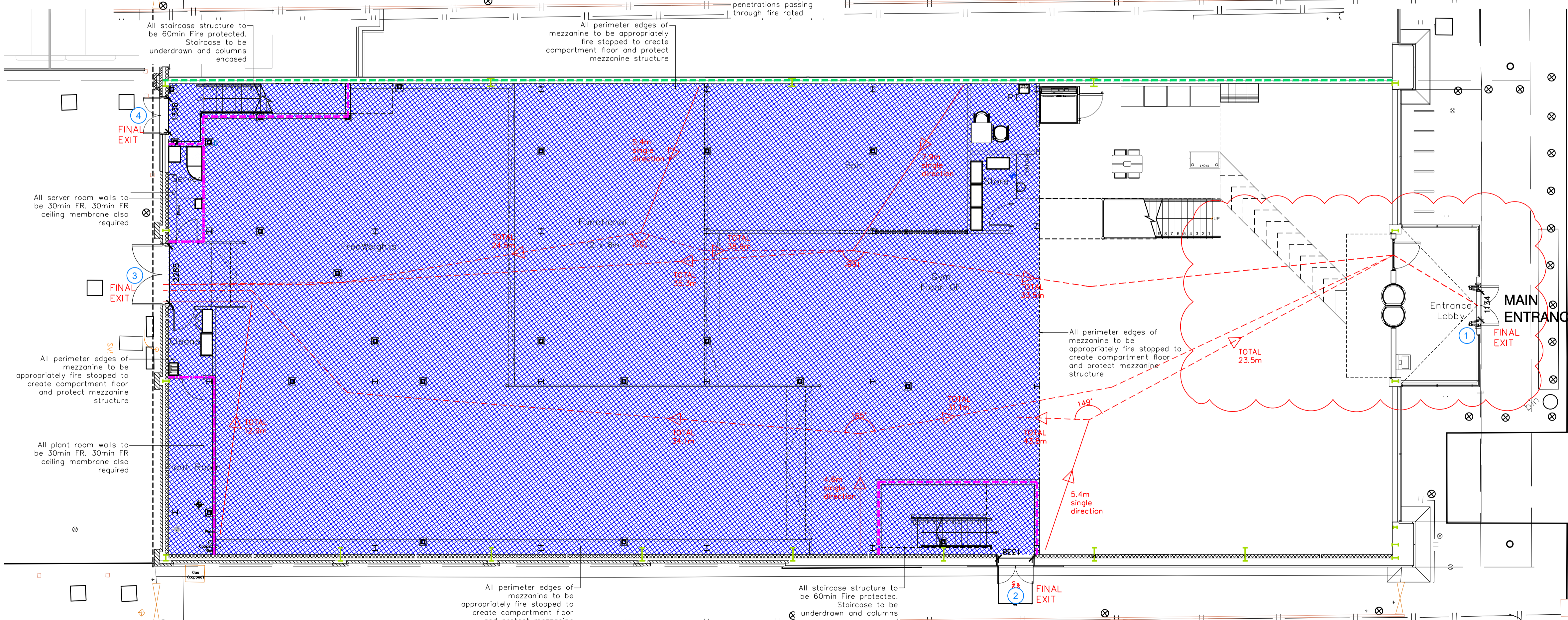


NOTE:

- Proposals must comply with all acoustic, fire & building regulation requirements
- No dimensions are to be scaled from this drawing. The contractor is responsible for checking all dimensions on site



Escape Route Widths:
In line with Sections 3.21 & 3.22 of 'Approved Document Part B, Volume 2 - buildings other than dwellings' - the adjacent calculations provide justification for the clear opening widths for escape from each floor level/ room in accordance with Table 4 & Appendix C.

Ground Floor:
Final Exit 1 Clear Opening Width = 1134mm (allows 236 persons to escape)
Final Exit 3 Clear Opening Width = 2285mm (allows 467 persons to escape - largest opening to be discounted)
Total Aggregate Width for Floor (Less Largest Opening Width of 2285mm from FINAL EXIT 3) = 1134mm

Mezzanine Floor:
Final Exit 2 Fed by Storey Exit A. Clear Opening Width = 1238mm (allows 297 persons to escape)
Final Exit 4 Fed by Storey Exit B. Clear Opening Width = 1238mm (allows 297 persons to escape - largest opening to be discounted)
Total Aggregate Width for Floor (Less Largest Opening Width of 238mm from STOREY EXIT B) = 1238mm

Total:
Ground Floor = 236 persons to escape
Mezzanine Floor = 297 persons to escape
Total = 493 persons to escape

Based on a NIA of 16,322sqft, the Puregym peak Occupancy Target = 241 Persons
Calculated using Puregym Fire Safety Occupancy Levels Forecast Tool

The designed occupancy of the unit as calculated would allow a max. No. of 493 persons to escape, which is larger than the total estimated occupancy capacity of 241 persons and is therefore thought to meet with the Approved Document Part B. To allow free movement between the floors the occupancy has not been split 50/50% but rather allows for occupancy based on gym stations and functions assuming that a high percentage of the total occupancy could be on a single floor at one time.

Fire Alarm
Fire Alarm designed and installed to BS 5839. Smoke & heat detection / emergency lighting by specialist. Please refer to M&E engineer's drawings / specifications.

Escape Lighting
Emergency escape lighting designed and installed in accordance with BS 5266: Part 1. Please refer to M&E Engineer's drawings for final layout and specification.
Escape Signage and emergency lighting is CDP under the M&E specification. Details of contractors proposals to be provided to Building Control Approved Inspector and Fire Officer within the Contractors Proposals Package, Clause 1.4

Rev	Date	Description	Drawn/Checked
PROJECT TITLE			
Unit K - Eastgate Retail Park Eastville, Bristol, BS5 6XX			Fire Escape Plan Ground & Mezzanine Floor
DRAWING NO.		SCALE	DRAWING NO.
04.02.2022		1:100 @ A1	2069
DRAWING PURPOSE		NO. OF SHEETS	REV
CONSTRUCTION		003 - FEP	C00
Pure Gym Ltd Town Centre House The Merrion Centre Leeds LS2 8LY e: architecture@puregym.com t: 0113 285 8787 w: www.puregym.com			