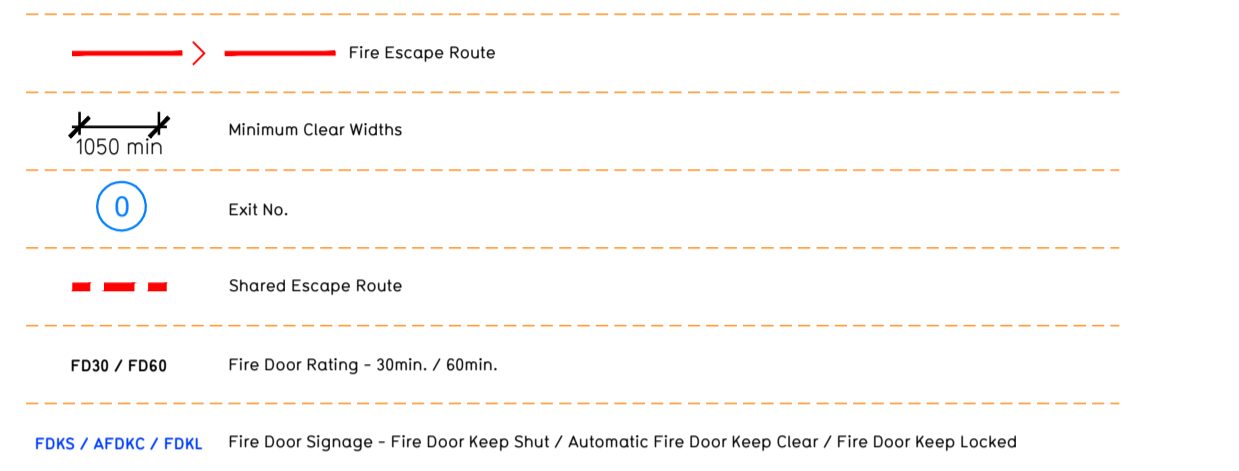
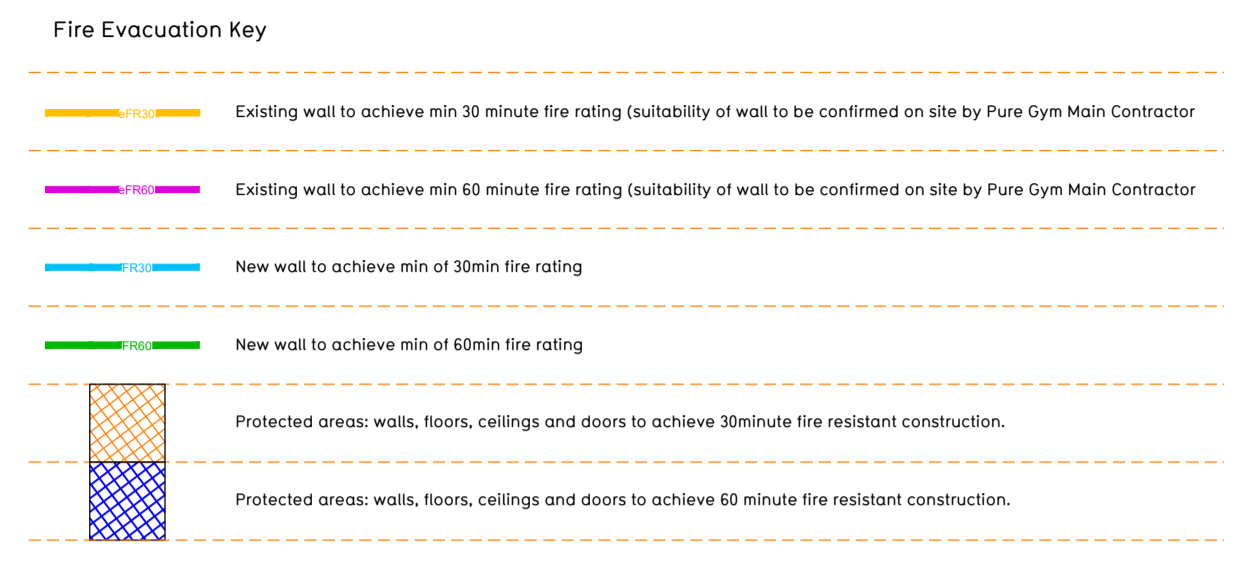
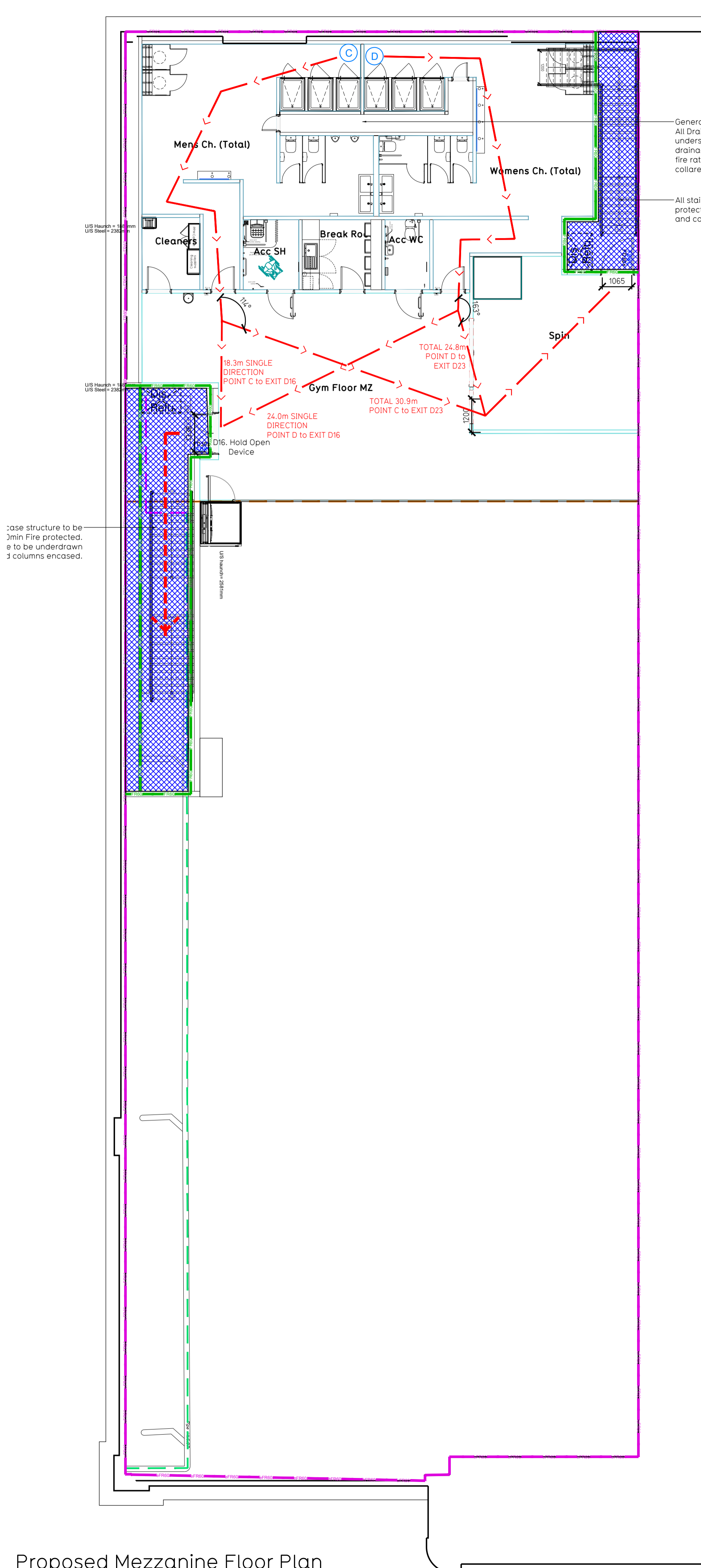
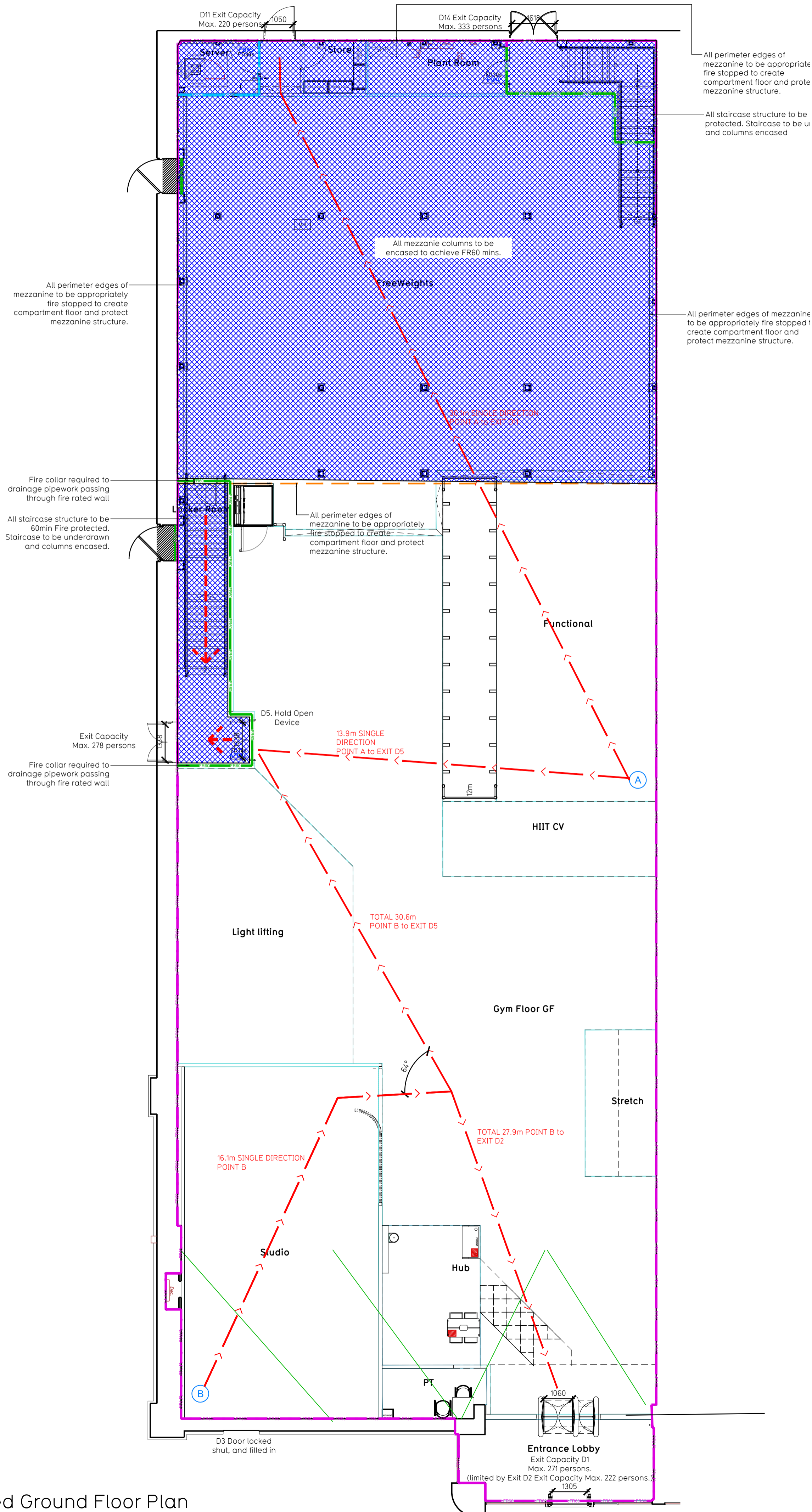


NOTE:

- Proposals must comply with all acoustic, fire & building regulation requirements
- No dimensions are to be scaled from this drawing. The contractor is responsible for checking all dimensions on site



Escape Route Widths:
In line with Sections 3.21 & 3.22 of 'Approved Document Part B, Volume 2 - buildings other than dwellings' - the adjacent calculations provide justification for the clear opening widths for escape from each floor level/ room in accordance with Table 4 & Appendix C.

Ground Floor
Final Exit D1 is led by Exit D2 Clear Opening Width = 1050mm (allows 222 persons to escape)
Final Exit D6 is led by Exit D5 Clear Opening Width = 1338mm (allows 278 persons to escape largest opening to be discounted)
Final Exit D11 Clear Opening Width = 1050mm (allows 223 persons to escape)
Total Aggregate Width for Ground Floor (Less Largest Opening Width of 1338mm from EXIT D5) = 1055mm = 221 persons. Ground Floor Total Estimated Occupancy Capacity = 198 Persons

Mezzanine Floor
Final Exit D16 is led by Storey Exit D11 Clear Opening Width = 1338mm (allows 278 persons to escape largest opening to be discounted)
Final Exit D14 is led by Storey Exit D23 Clear Opening Width = 1055mm (allows 223 persons to escape)
Total Aggregate Width for Mezzanine Floor (Less Largest Opening Width of 1338mm from EXIT D23) = 1065mm (allows 223 person to escape).
Total Ground Floor = 198 Persons to Escape
Mezzanine Floor = 221 Persons to Escape
Total of 421 persons to Escape.

Based on a NIA of 10,555.3 sqm, the Puregym Peak Occupancy Target = 198 Persons. Calculated using Puregym Fire Safety Occupancy Levels Forecast designed occupancy of the unit as calculated below would allow a max. No. of 421 persons to escape, which is larger than the total estimated occup capacity of 198 Persons and is therefore thought to meet with the Approved Document Part B.

Fire Alarm
Fire Alarm designed and installed to BS 5839. Smoke & heat detection / emergency lighting by specialist. Please refer to M&E engineer's drawings / specifications.

Escape Lighting
Emergency escape lighting designed and installed in accordance with BS 5266: Part 1. Please refer to M&E Engineer's drawings for final layout and sp.

Fire Stopping
All perimeter edges of mezzanine to be appropriately fire stopped to create compartment floor and protect mezzanine structure. All services/drains penetrations passing through fire rated compartment floor to be fire collared/sealed.

Mezzanine
Mezzanine Design CDP: New mezzanine structure including deck and column connections to be 60min FR using a boarded solution. Ceiling to be clear ready to receive decoration. Service penetrations to be coordinated and suitably fire stopped. Contractor to submit proposals for design to be reviewed by building control and fire service. Escape Signage and emergency lighting is CDP under the M&E specification. Details of contractors proposals to be Building Control Approved Inspector and Fire Officer within the Contractors Proposals Package, Clause 14.

Rev	Date	Description	Drawn/ Checked
PROJECT TITLE		DRAWING TITLE	
Hull, Clough Rd		Fire Evacuation Plan	
Clough Road Retail Park, HU6 7PT		Ground & Mezzanine Floor Plans	
DRAWN / CHECKED		SCALE	
M/J/N/T/S		1:100 @ A1	
DATE		CONSTRUCTION	
19.07.24			
DRAWING NO.			
2435_XX_003_FEP_C00			
		Pure Gym Ltd Town Centre House The Merston Centre Leeds LS2 8LY e: architecture@puregym.com w: www.puregym.com	

Proposed Ground Floor Plan

Proposed Mezzanine Floor Plan