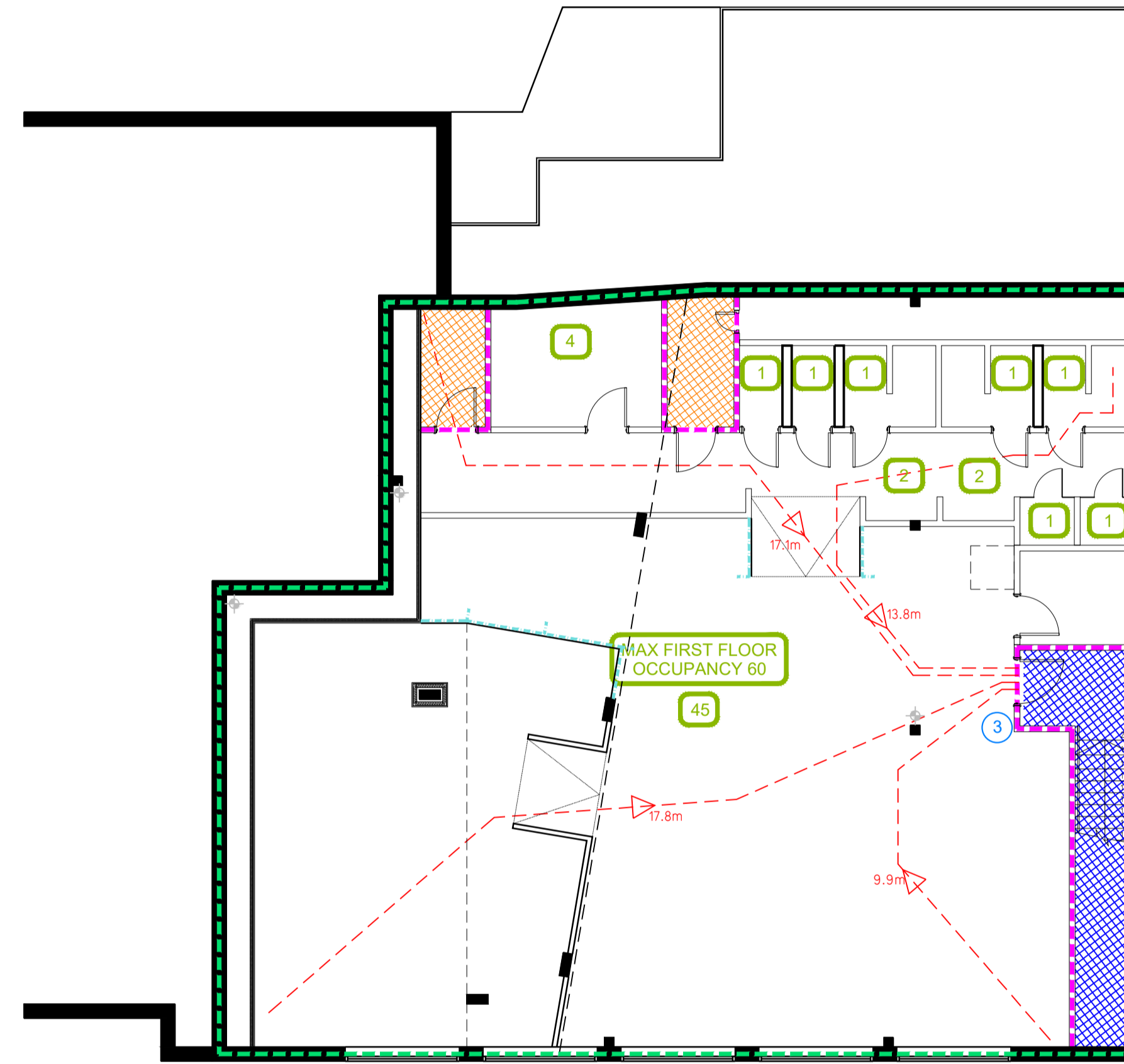


Proposed Ground Floor



Proposed First Floor

Fire Evacuation Key

- Existing wall to achieve min 60 minute fire rating (suitability of wall to be confirmed on site by Pure Gym Main Contractor)
- New wall to achieve min of 60min fire rating
- Protected areas: walls, floors, ceilings and doors to achieve 30minute fire resistant construction.
- Protected areas: walls, floors, ceilings and doors to achieve 60 minute fire resistant construction.

- 30 Occupancy level within area
- Fire Escape Route
- 0 Exit No.
- Shared Escape Route

Escape Route Widths

In line with Sections 3.21 & 3.22 of 'Approved Document Part B, Volume 2 - buildings other than dwellings' - the adjacent calculations provide justification for the clear opening widths for escape from each floor level/ room in accordance with Table 4.4, Appendix C.

Ground Floor

Exit Route 1 Clear Opening Width = 1050mm (largest opening to be discounted)
 Exit Route 2 Clear Opening Width = 850mm (allows 10 persons to escape)
 Total aggregate escape width for floor level (less largest opening width of 1050mm from Exit Route 1) = 850mm

Ground Floor Total Estimated Occupancy Capacity = 75 Persons

Escape Route 1 provides a min. width of 850mm and would allow a max. No. of 10 persons to escape in the event of an emergency. This is larger than the Ground Floor estimated occupancy capacity of 75 Person and is therefore thought to meet with the Approved Document Part B.

First Floor

Exit 3 Route Clear Opening Width = 850mm (allows 10 persons to escape) - Limited to 60 persons due to single point of exit.

Ground Floor Total Estimated Occupancy Capacity = 75 Person

Exit route 3 provides a min. width of 850mm and would allow a max. No. of 10 persons to escape. However due to there only being a single point of escape from first floor, this is restricted to a max occupancy of 60 persons. This is sufficient to provide means of escape for the maximum estimated occupancy of 56 persons and is therefore thought to meet with the Approved Document Part B.

Fire Alarm

Fire alarm designed and installed to BS 5833. Smoke & heat detection / emergency lighting by specialist. Please refer to MSE Engineer's drawings / specifications.

Escape Lighting

Emergency escape lighting designed and installed in accordance with BS 5266: Part 1. Please refer to MSE Engineer's drawings for final layout and specification.

Rev.	Date	Description	Drawn/ Checked
C	09.09.19	Plan amended to suit updated layout	MC/PG
B	13.07.19	Fire evacuation routes amended to suit revised layout. Indicative kit positions shown to inform realistic user routes	MC / PG
A	11.06.19	Layout revised following internal review and fire evacuation principles amended to suite. Escape route width's notes updated.	IR / PG

PROJECT TITLE		DRAWING TITLE	
Unit 2 Southampton Way, Camberwell, London, SE5 7EJ		Means Of Escape Plan Ground and First Floor	
DRAWN / CHECKED	DATE	SCALE	JOB No.
IR/PG	06.02.19	1:100@A1 / 1:200@A3	IA-SBF-03
DRAWING PURPOSE	CONSTRUCTION	Rev	003-FEP
		C	

Pure Gym Ltd
 Town Centre House
 The Merrion Centre
 Leeds
 LS2 8LY

e: architecture@puregym.com
 t: 0113 285 8787
 w: www.puregym.com