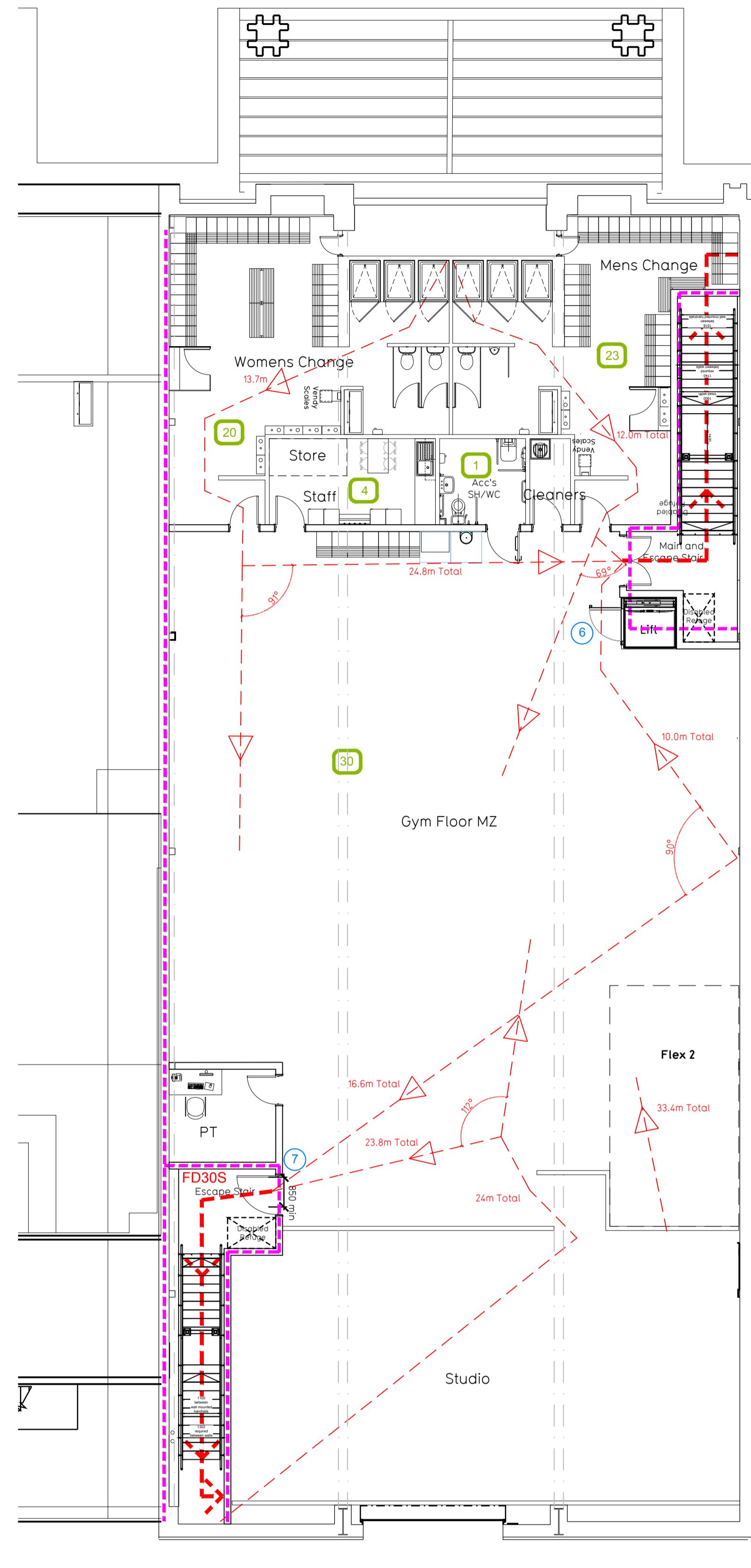


Proposed Ground Floor Plan



Proposed Mezzanine Floor Plan

Fire Evacuation Key

- Existing wall to achieve min 60 minute fire rating (suitability of wall to be confirmed on site by Pure Gym Main Contractor)
- New wall to achieve min of 60min fire rating
- Protected areas: ceiling/mezzanine floor to achieve 60minute fire resistant construction.
- Protected areas: walls, floors, ceilings to achieve 60 minute fire resistant construction, doors as specified.
- 30 Occupancy level within area
- Fire Escape Route
- Minimum Clear Widths
- 0 Exit No.
- Protected Escape Route

Escape Route Widths

In line with Sections 3.21 & 3.22 of 'Approved Document Part B, Volume 2 - buildings other than dwellings' - the adjacent calculations provide justification for the clear opening widths for escape from each floor level/ room in accordance with Table 4 & Appendix C.

Fire Alarm

Fire Alarm designed and installed to BS 5839. Smoke & heat detection / emergency lighting by specialist. Please refer to M&E engineer's drawings / specifications.

Escape Lighting

Emergency escape lighting designed and installed in accordance with BS 5266: Part 1. Please refer to M&E Engineer's drawings for final layout and specification.

First Floor

Exit 6 Clear Opening Width = 1300mm (allows 220 persons to escape)
Exit 7 Clear Opening Width = 850mm (allows 110 persons to escape)
Exit 6 Largest opening and discounted.

Total Aggregate Width for Floor (Less Largest Opening Width of 1300mm from Exit 6) = 850mm

First Floor Total Estimated Occupancy Capacity = 110 Persons

Exit 7 provides a min. width of 850mm and would allow a max. No. of 110 persons to escape, which is sufficient for the total estimated occupancy capacity of 110 Persons and is therefore thought to meet with the Approved Document Part B.

Ground Floor

Exit 1 Clear Opening Width = 1100mm (allows 220 persons to escape)
Exit 4 Clear Opening Width = 1300mm (allows 220 persons to escape)
Exit 5 Clear Opening Width = 1300mm (allows 220 persons to escape)
Exit 4 Largest opening and discounted.

Total Aggregate Width for Floor (Less Largest Opening Width of 1300mm from Exit 5) = 2400mm

Ground Floor Total Estimated Occupancy Capacity = 110 Persons

Exit 1 and 4 provides a min. width of 2400mm and would allow a max. No. of 220 persons to escape, which is sufficient for the total estimated occupancy capacity of 110 Persons and is therefore thought to meet with the Approved Document Part B.

Final Exit

Exit 1 serves only the ground floor having a clear width of at least 1100mm and have an escape capacity of 220 people. Exceeds the required 110 occupancy of the floor.

Exit 2 serves both the ground floor and first floor having a clear width of at least 1300mm and have a combined escape capacity of 220 people.

Exit 3 serves both the ground floor and first floor having a clear width of at least 1300mm and have a combined escape capacity of 220 people.

Rev	Date	Description	Drawn/Checked
C	12.08.19	Existing overhead structure amended, notes added.	EK/PG
B	26.07.19	Revised mezzanine overlaid.	EK/PG
A	22.07.19	plan amended to reflect latest GA.	EK/PG

PROJECT TITLE	DRAWING TITLE
St Albans Unit 3, Abbey View Retail Park Griffiths Way, Hertfordshire, AL1 2RJ	Fire Escape Plan Ground & Mezzanine Floor Plans

DRAWING PURPOSE	DATE	SCALE	REV
EK/ARB	11.04.19	1:100 @ A1	IA-LBF-027 003-FEP

APPROVAL

Pure Gym Ltd
Town Centre House
The Merrion Centre
Leeds
LS2 8LY

e: architecture@puregym.com
t: 0113 285 9707
w: www.puregym.com